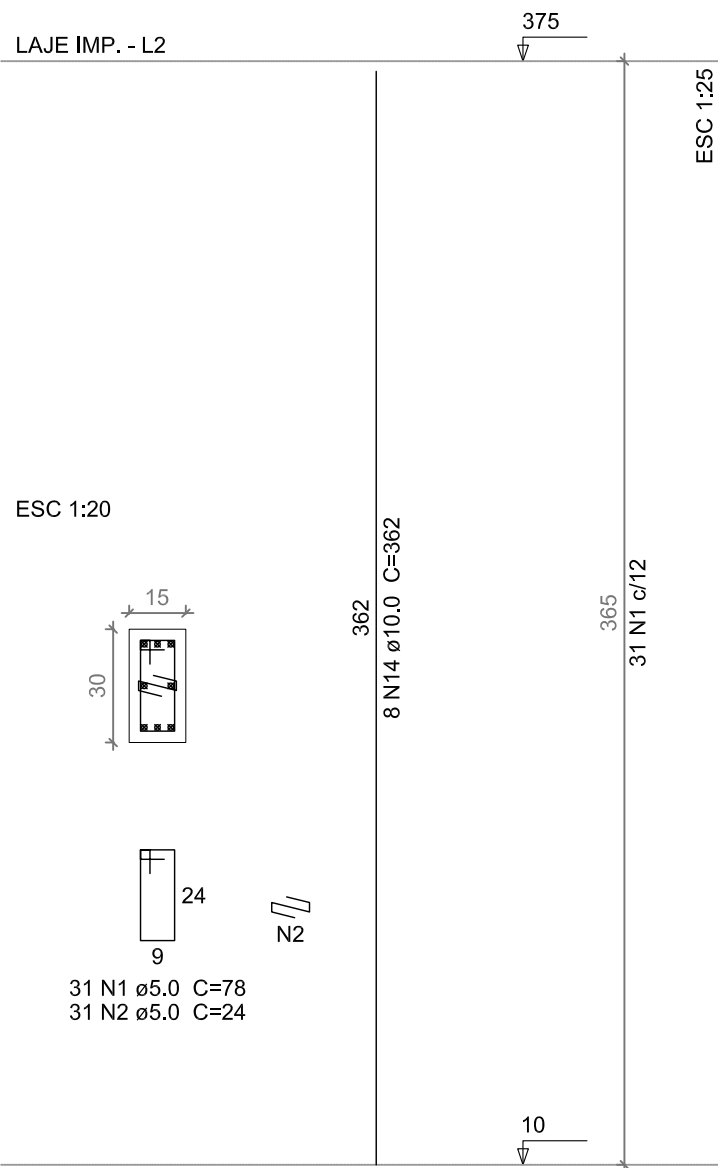
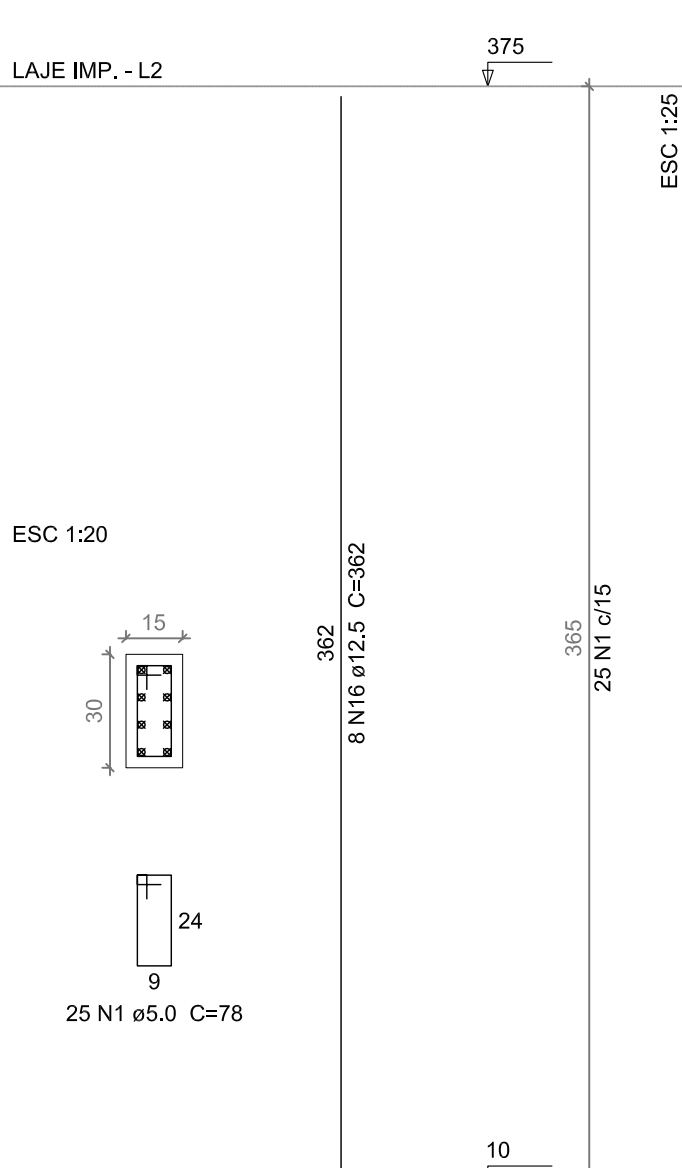


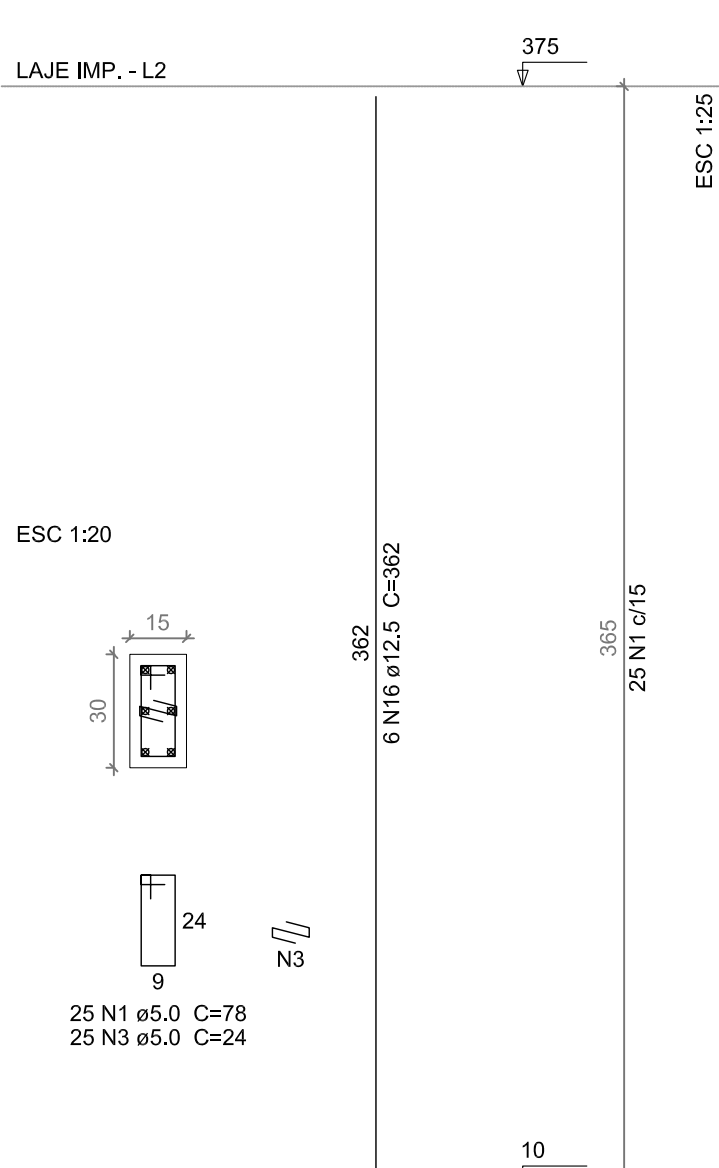
P30



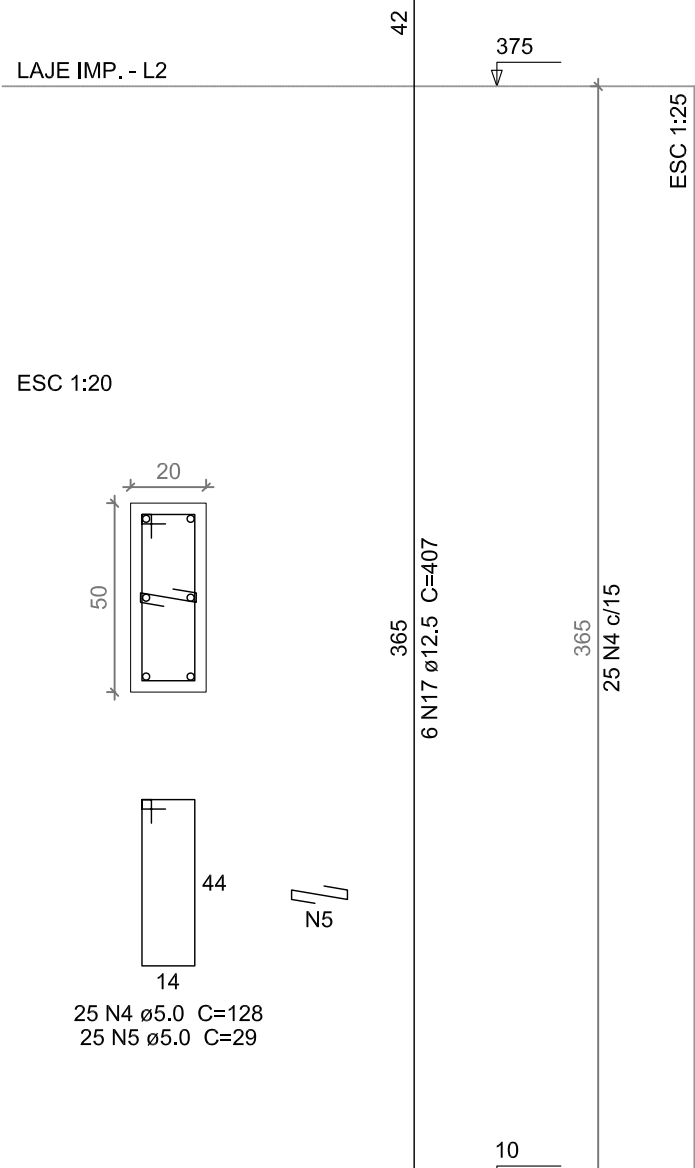
P31



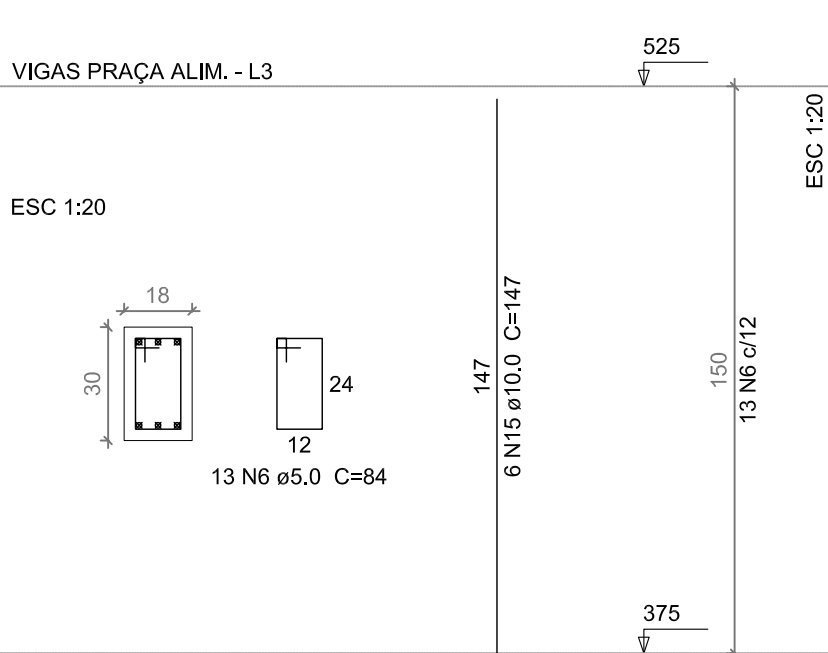
P32



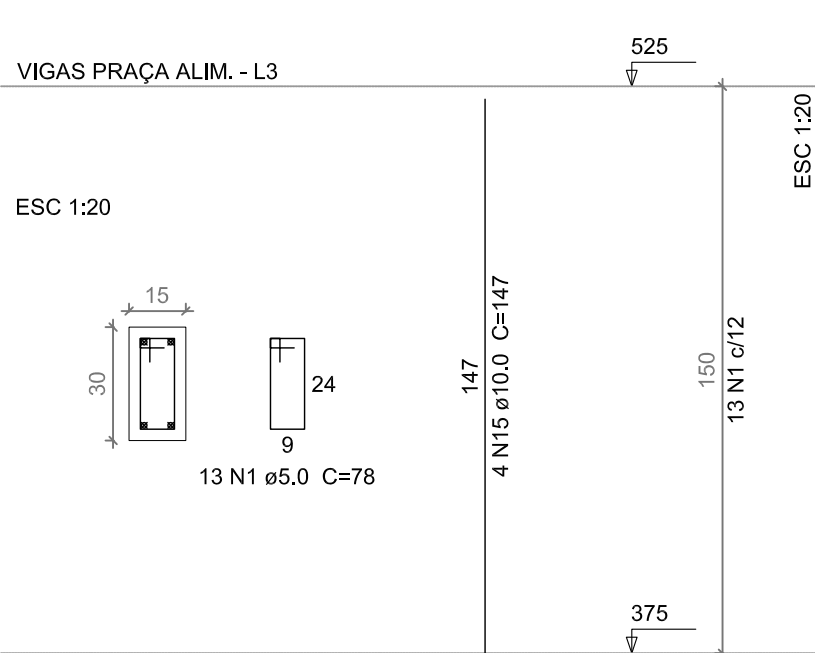
P37



P1=P3=P12



P2=P10=P11=P14=P23



Relação do aço

LAJE IMP.:	P30	P31
VIGAS PRAÇA ALIM.:	P32	P37
	5xP2	5xP8
	2xP7	6xP8
	P9	P15
	P19	P20
	P21	P22
	P24	P37

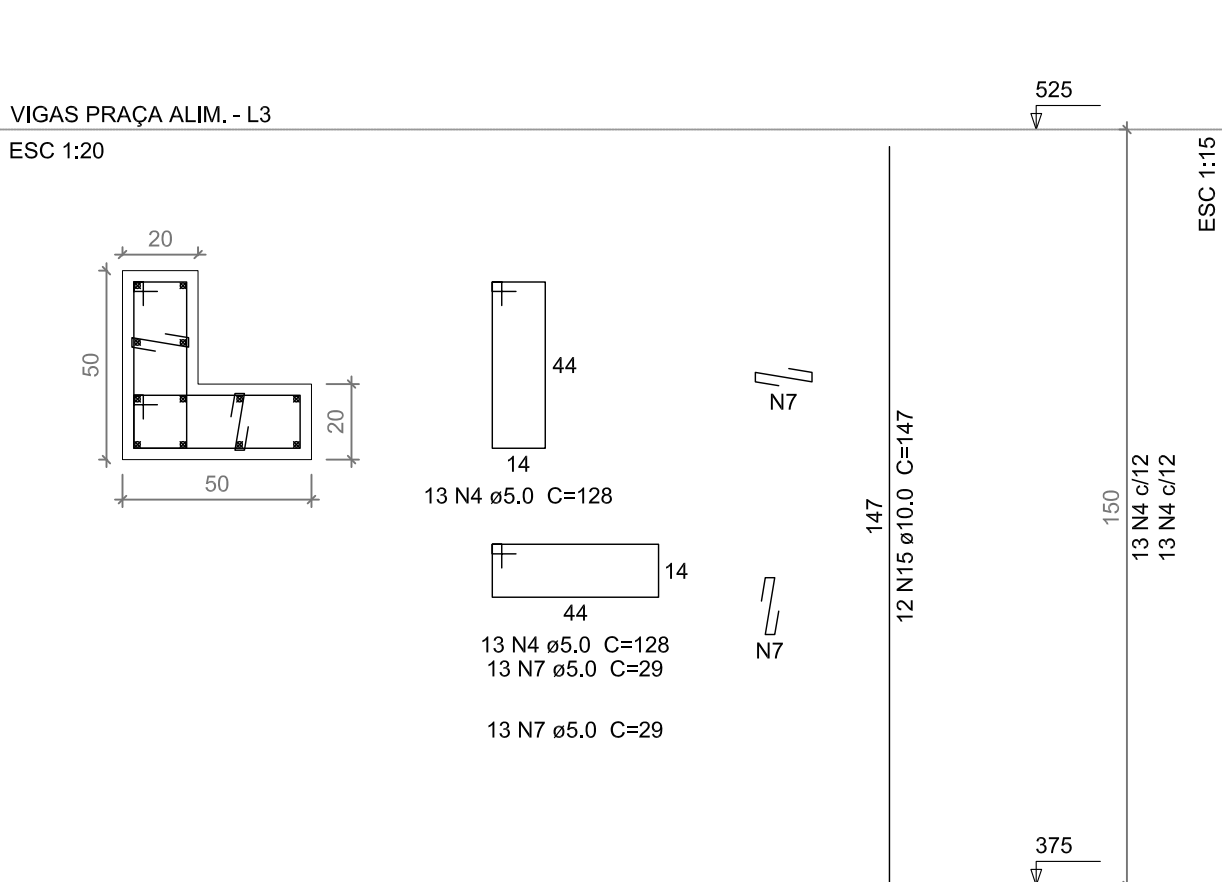
AÇO	N	DIAM (mm)	QUANT (Barras)	UNIT (cm)	C.TOTAL (cm)
CA60	1	5.0	156	78	12168
	2	5.0	44	24	1056
	3	5.0	25	24	600
	4	5.0	165	128	21120
	5	5.0	45	29	1305
	6	5.0	49	84	4116
	7	5.0	143	29	4147
	8	5.0	14	108	1512
	9	5.0	28	39	1092
	10	5.0	23	108	2484
	11	5.0	13	104	1352
	12	5.0	10	27	270
	13	5.0	13	118	1534
CA50	14	10.0	8	362	2896
	15	10.0	122	147	17934
	16	12.5	14	362	5068
	17	12.5	6	407	2442
	18	12.5	30	147	4410

Resumo do aço

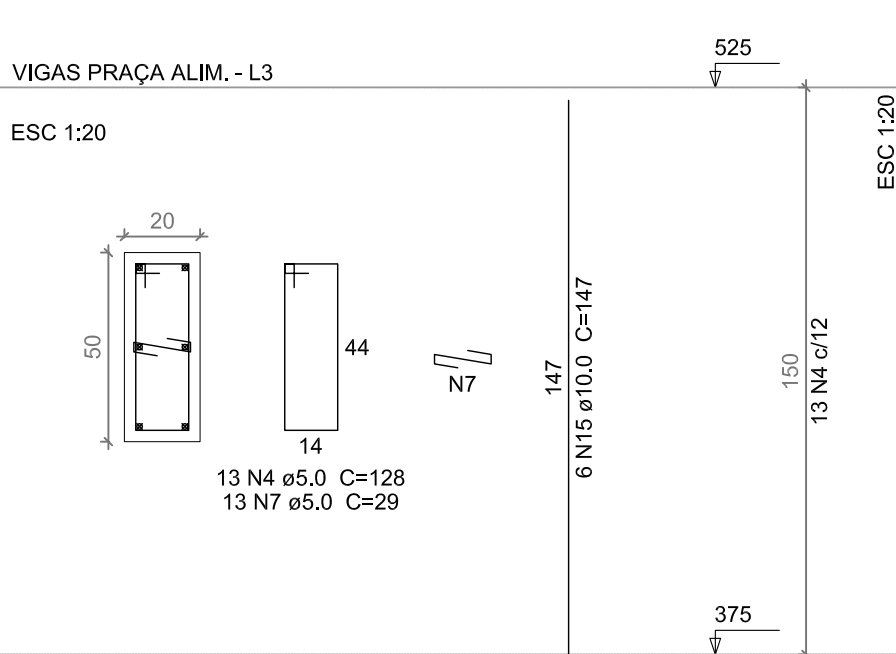
AÇO	DIAM (mm)	C.TOTAL (m)	PESO + 10 % (kg)
CA50	10.0	208.3	141.3
	12.5	119.2	126.3
CA60	5.0	527.6	89.4
PESO TOTAL (kg)			
CA50	267.6		
CA60	89.4		

Volume de concreto (C-30) = 3,71 m³  
Área de forma = 58,62 m²

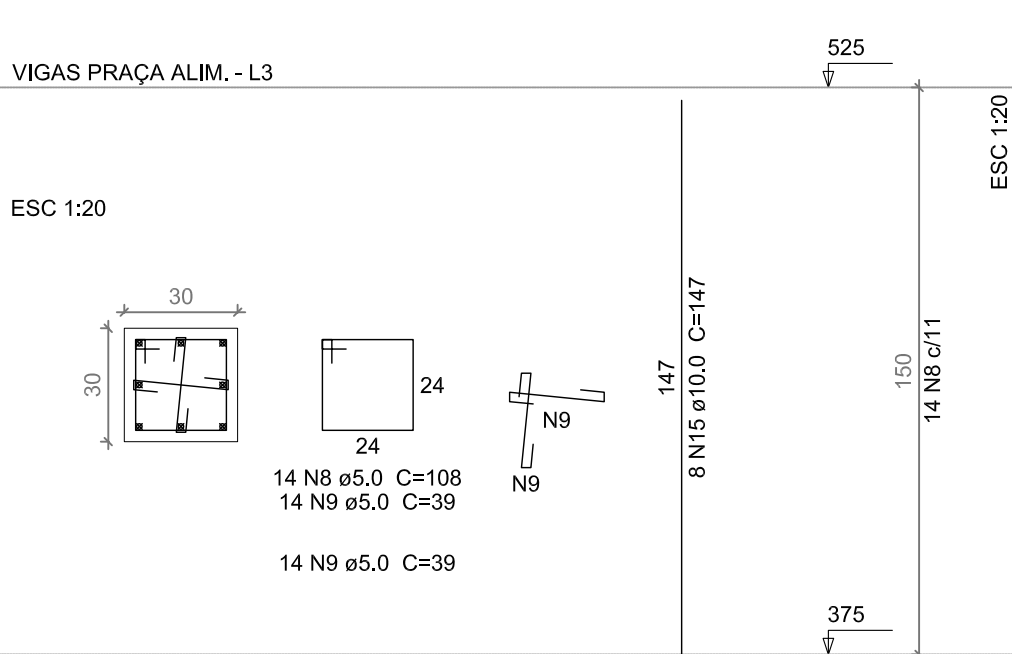
P7=P33



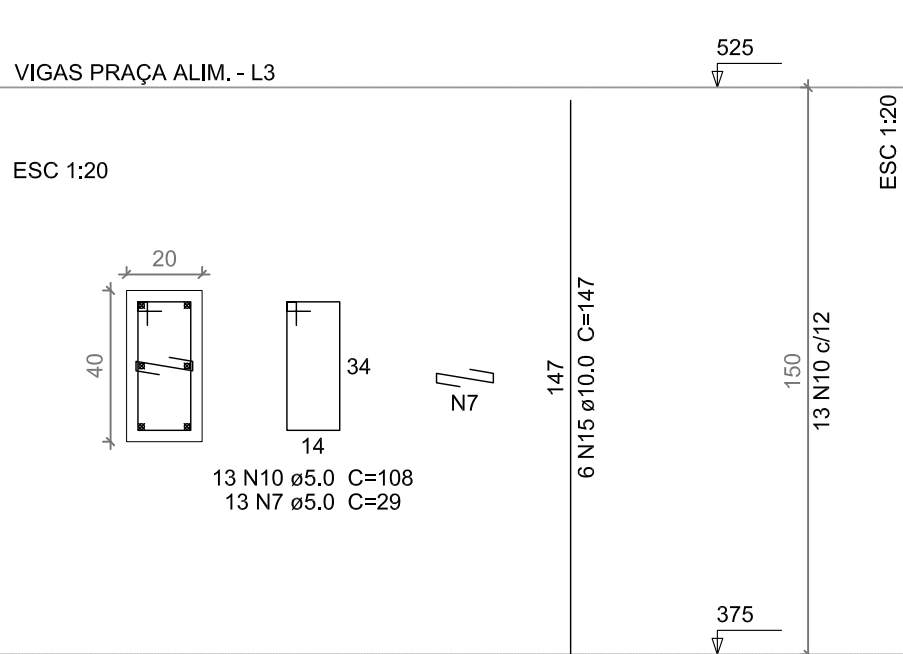
P8=P16=P18=P35=P36=P38



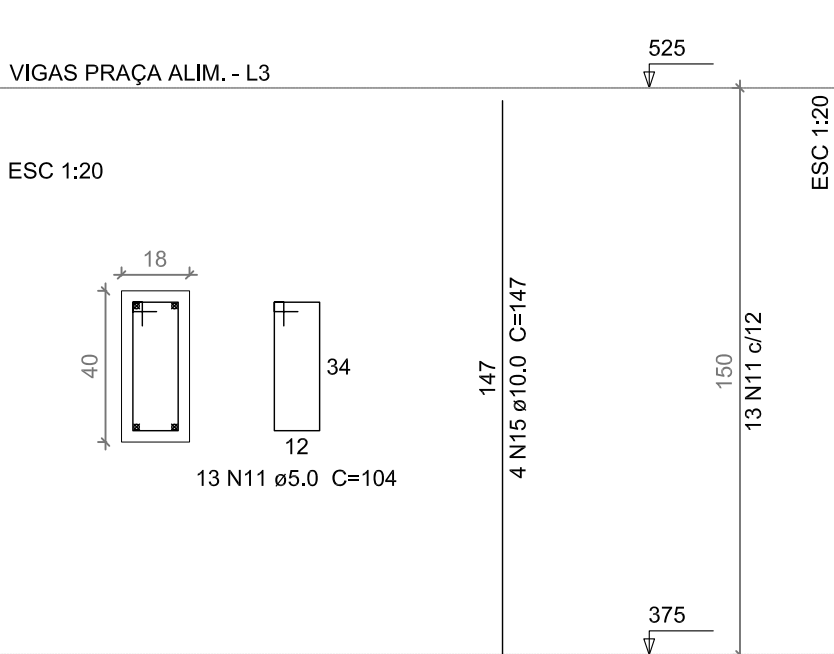
P9



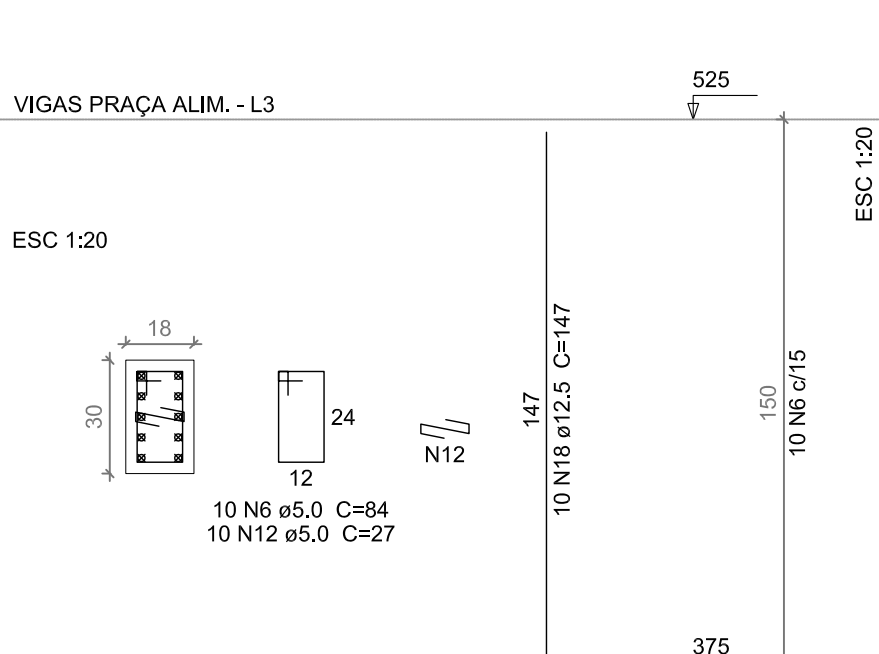
P15



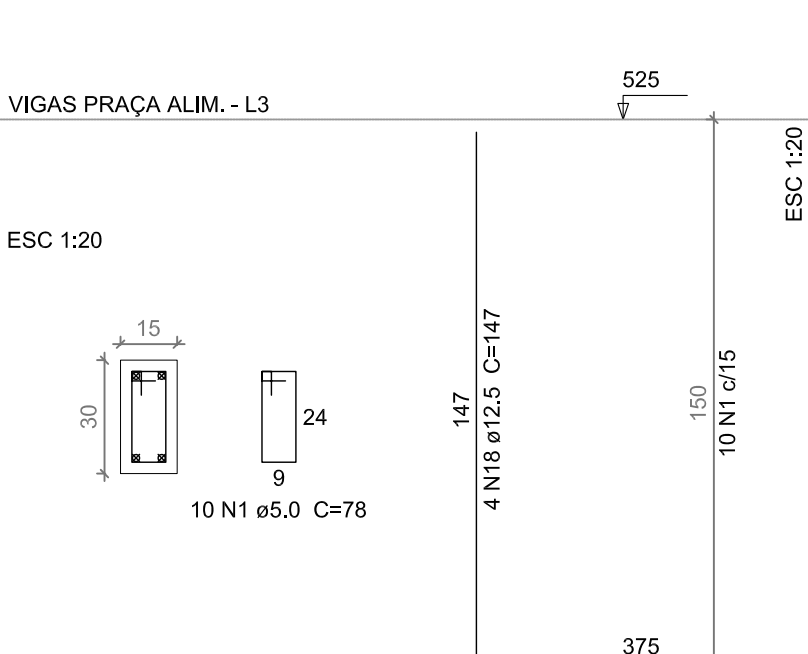
P19



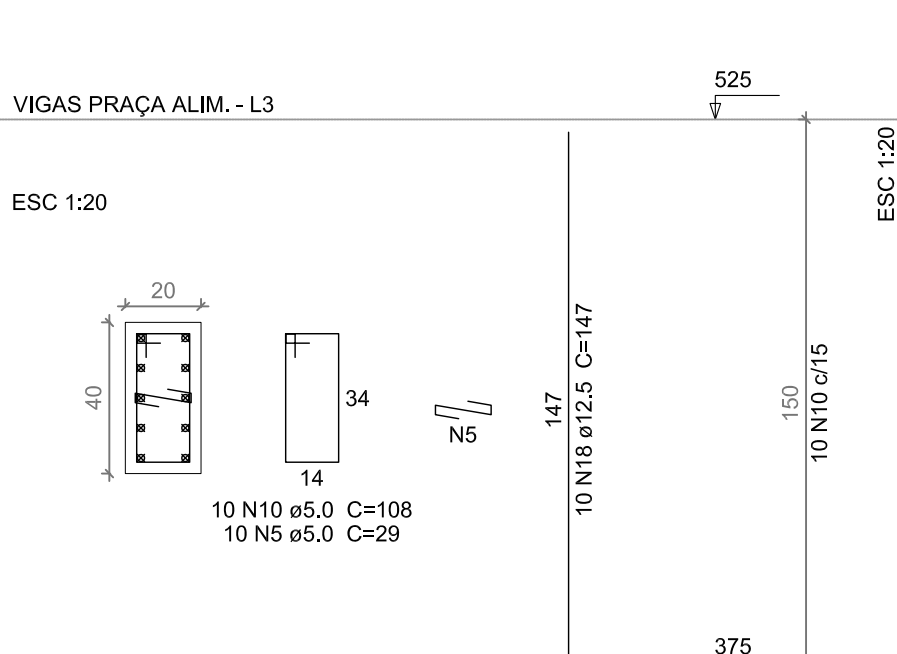
P20



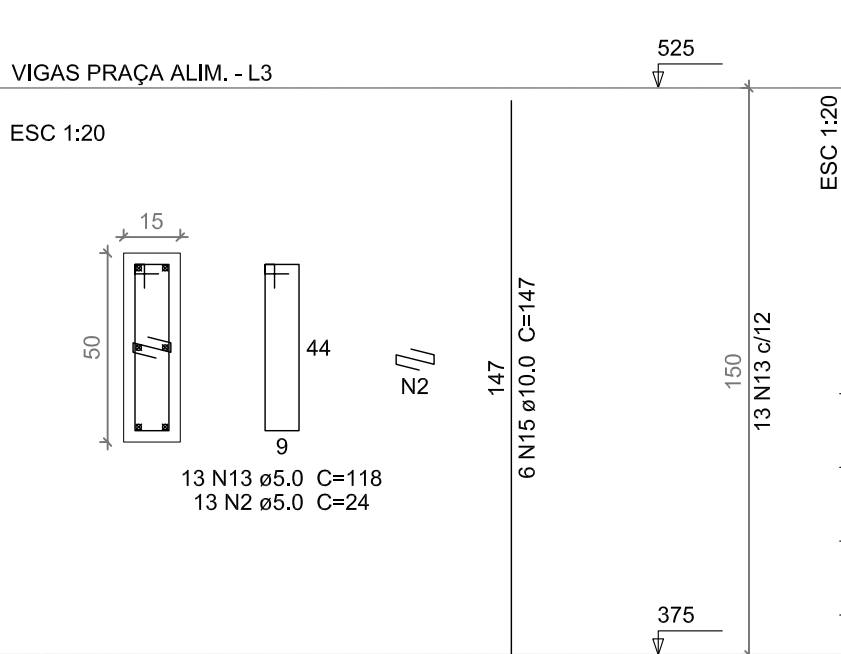
P21



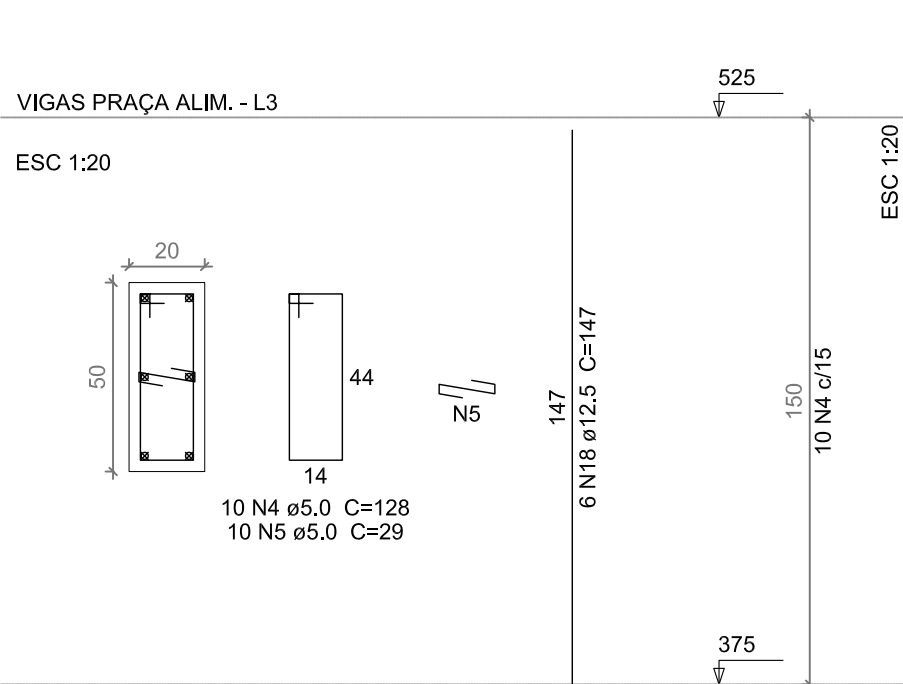
P22




P24



P37




Nº	ALTERAÇÃO/REVISÕES	REVISADO POR	DATA



INSTITUTO FEDERAL  
SERGIPE

AUTOR DO PROJETO:

Engº. Fredrico Damasceno Pinheiro  
CREA 270082778-3



AD  
ENGENHARIA  
edongenheiro.eng.br

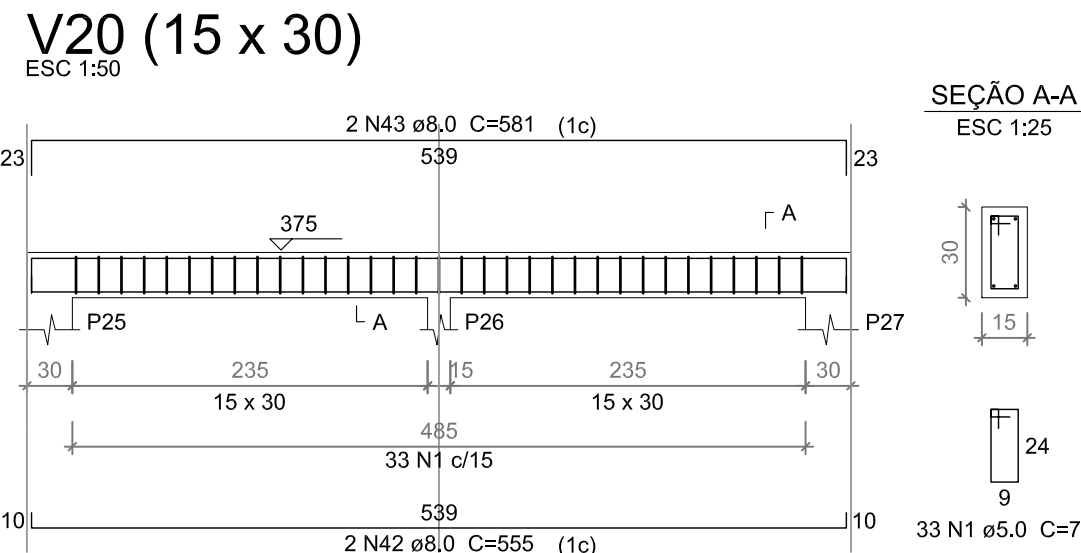
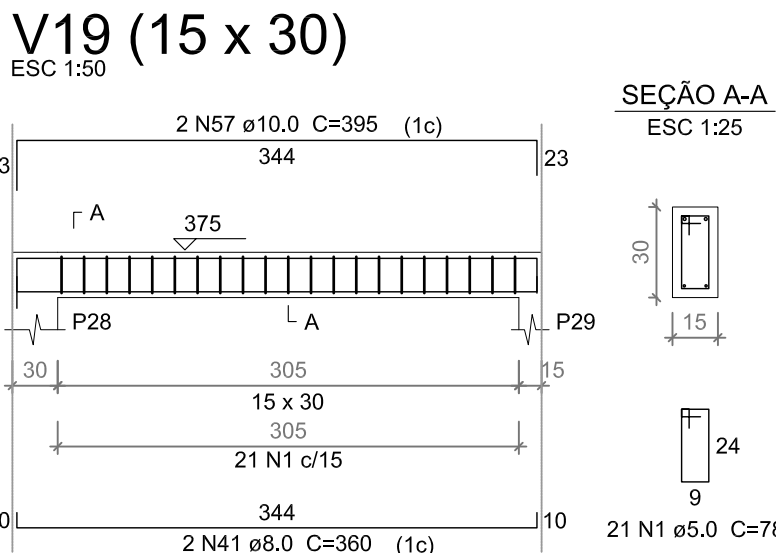
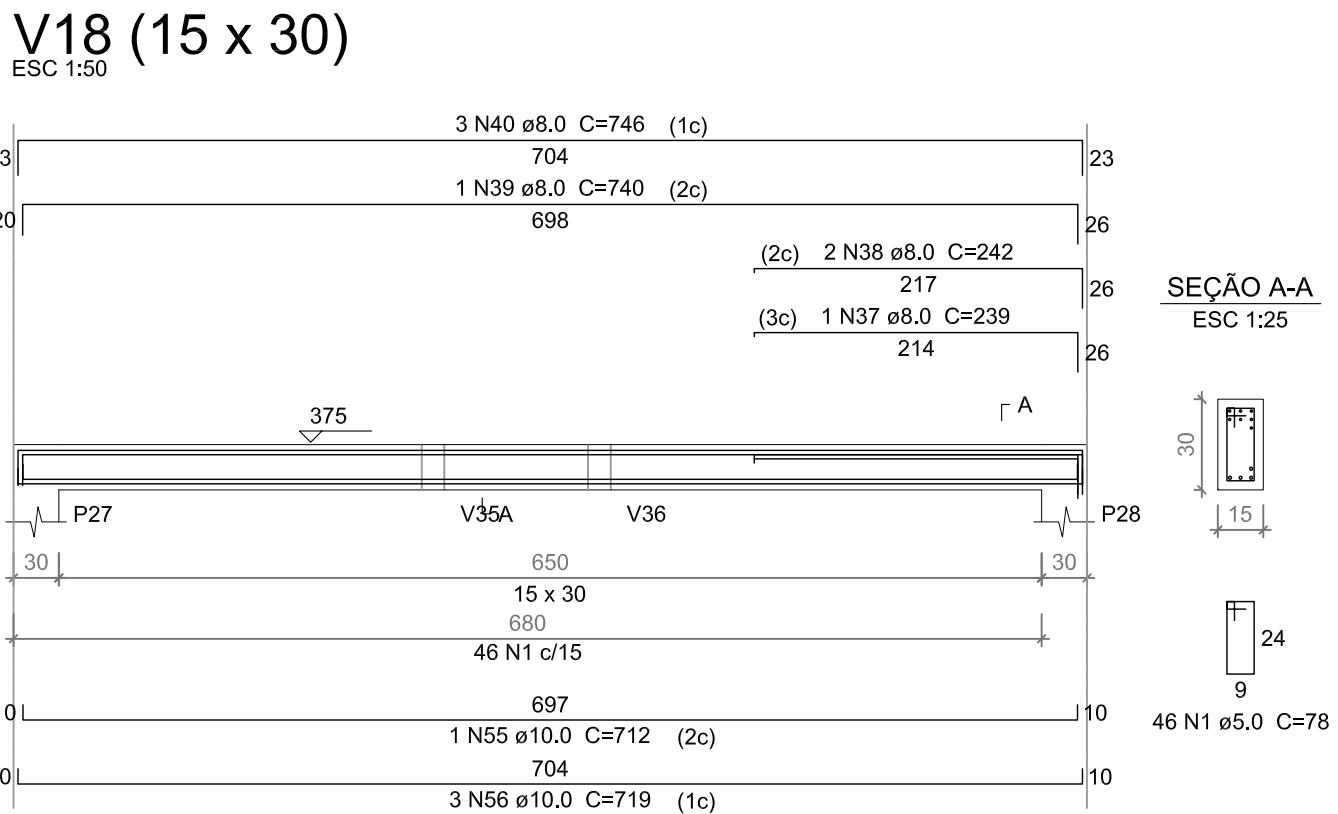
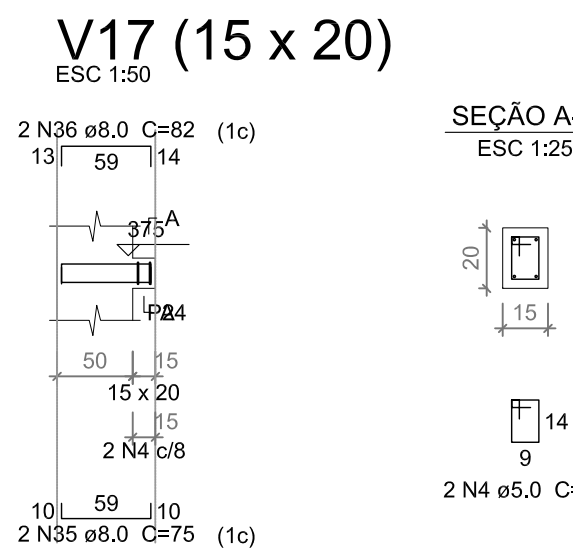
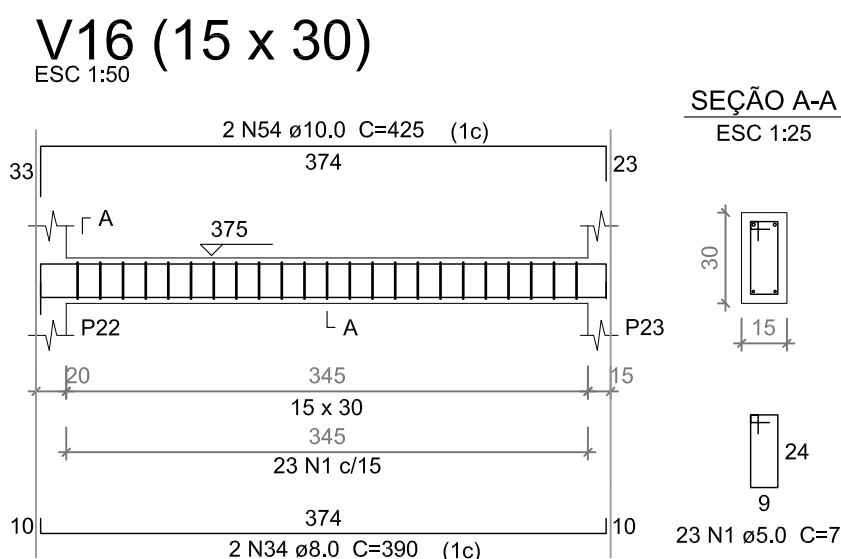
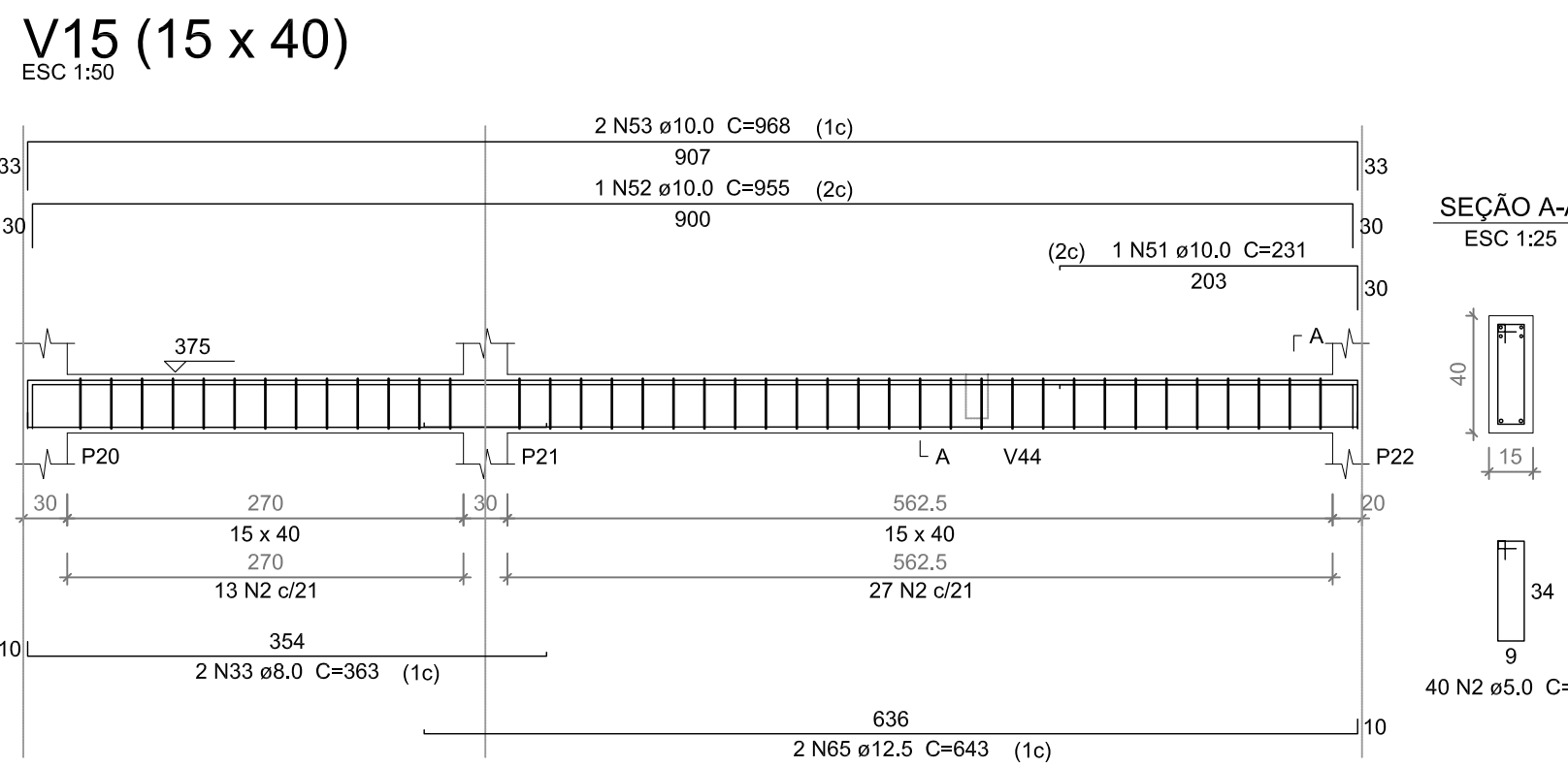
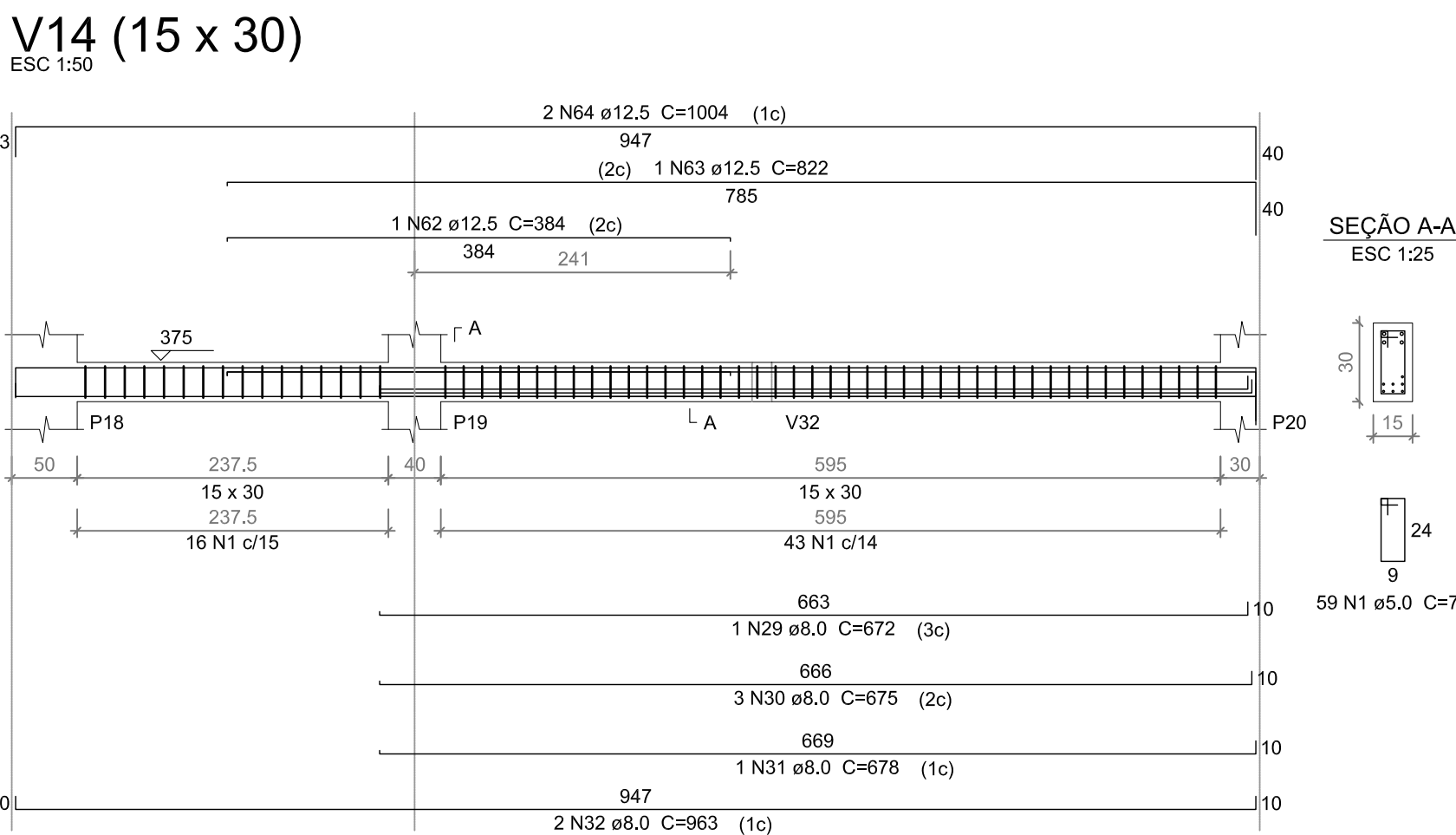
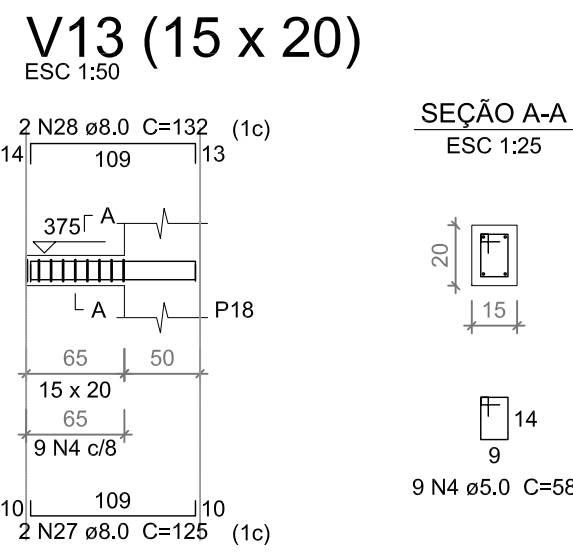
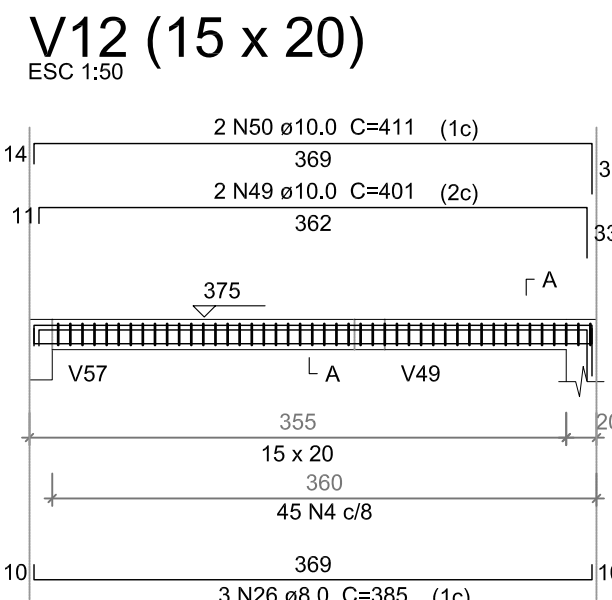
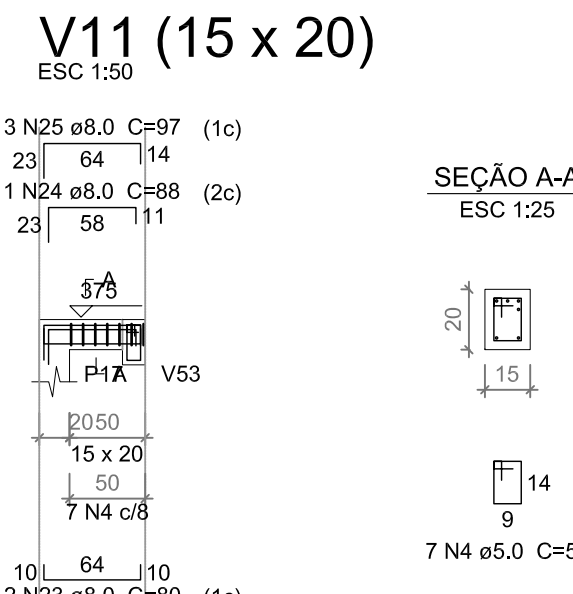
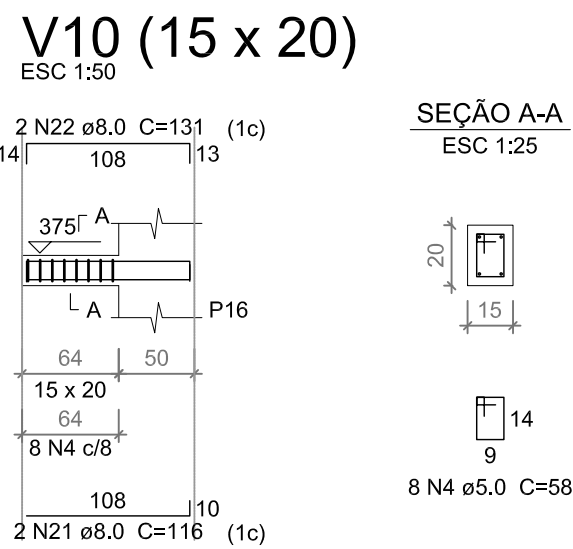
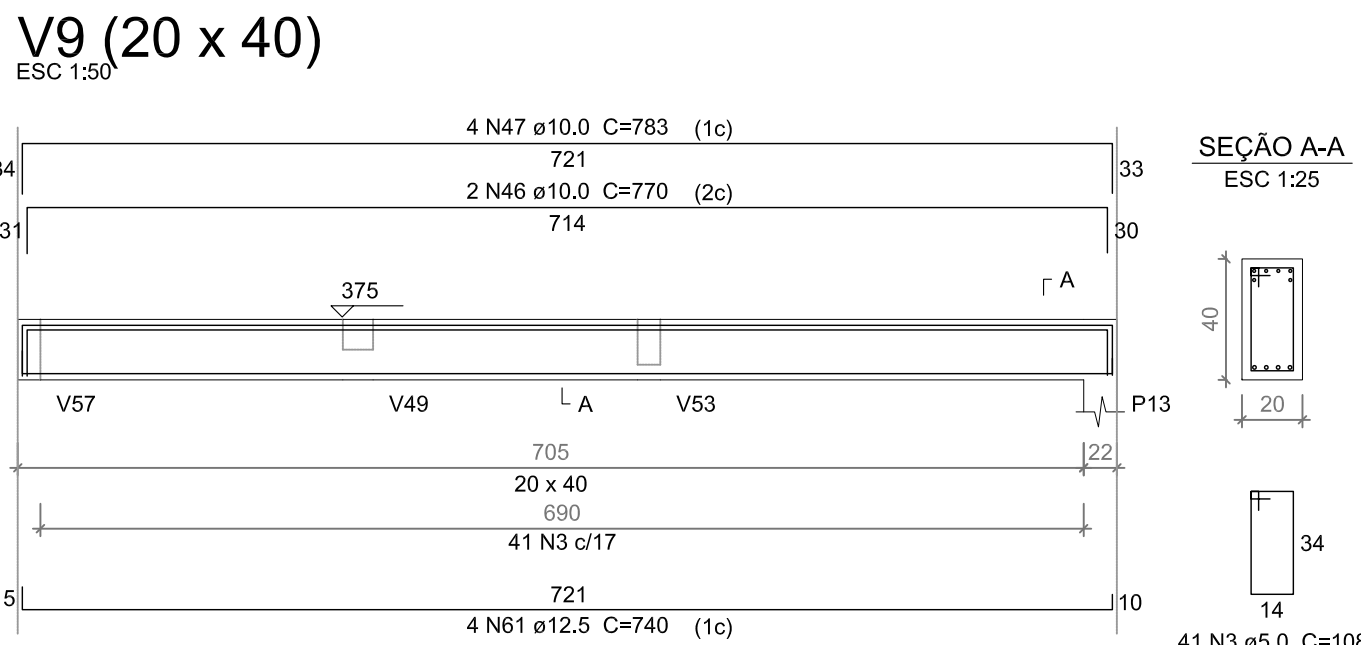
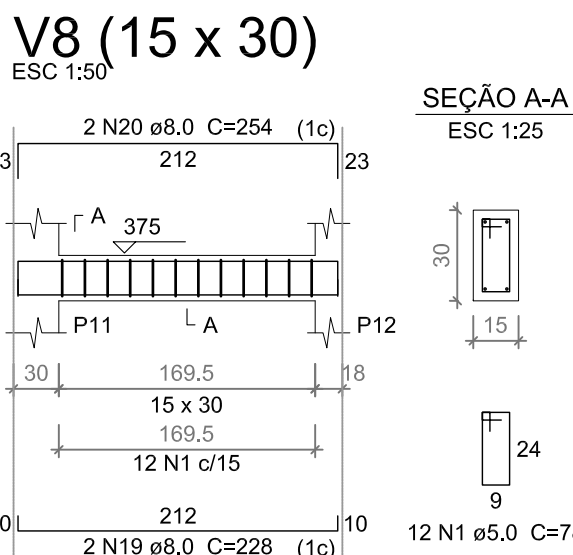
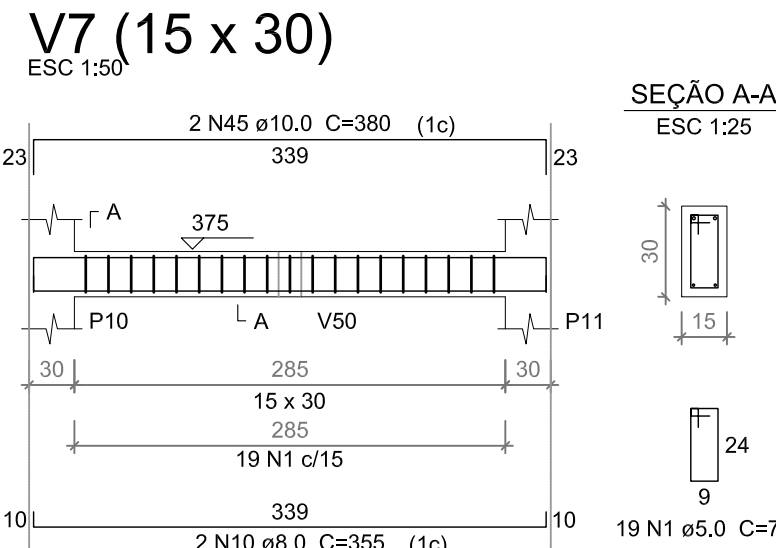
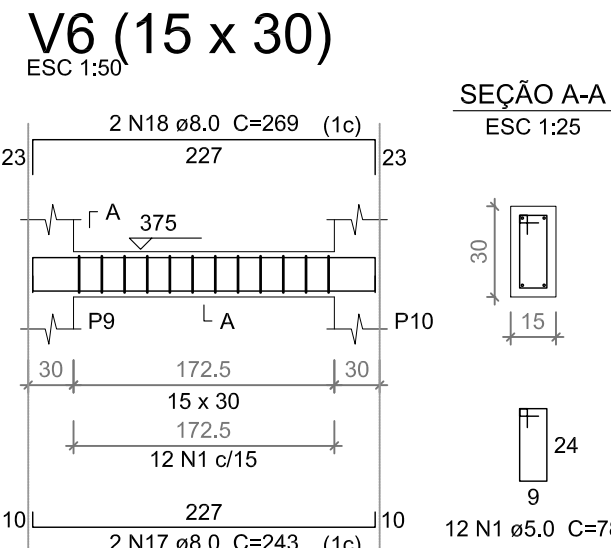
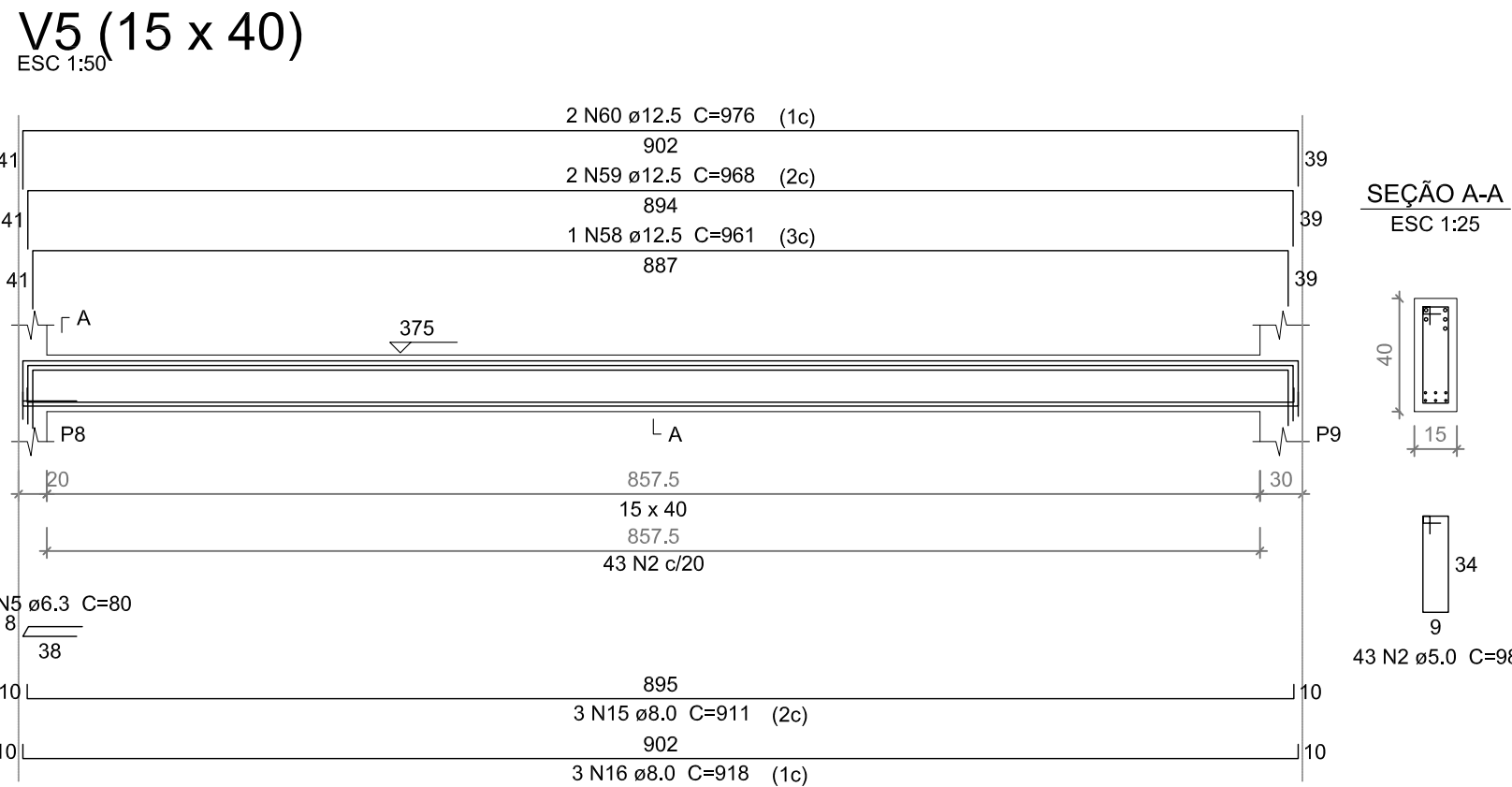
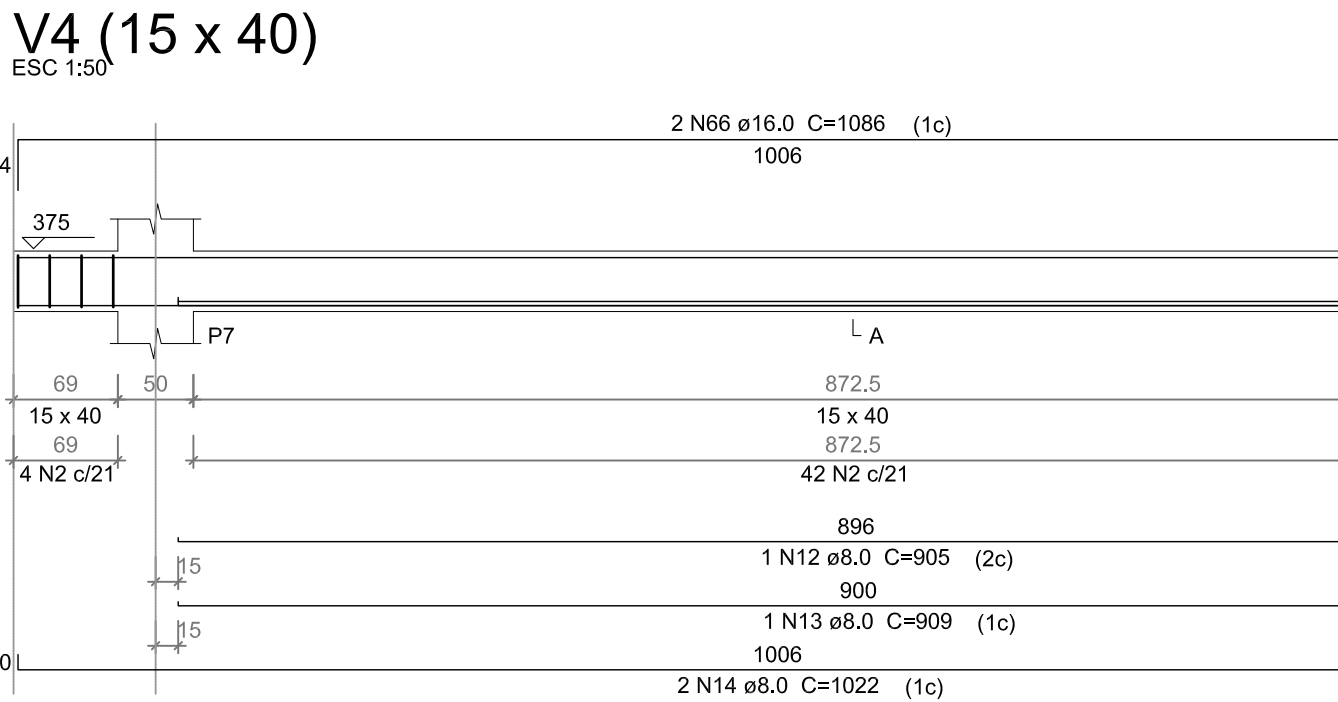
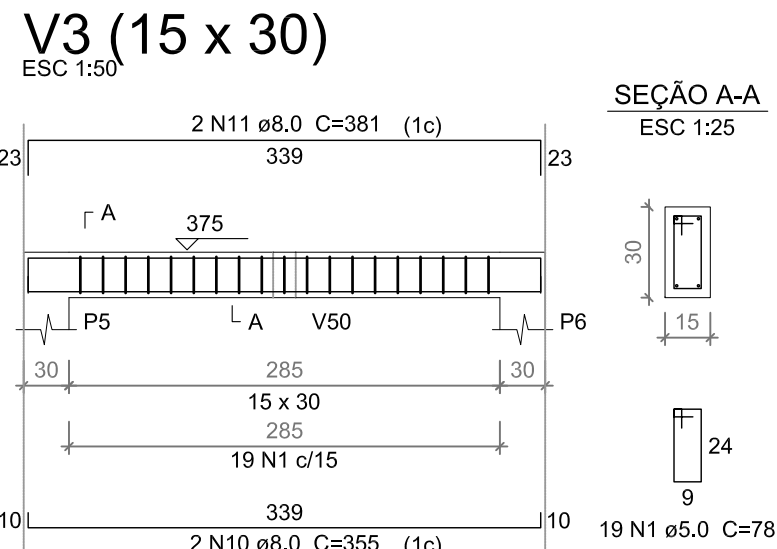
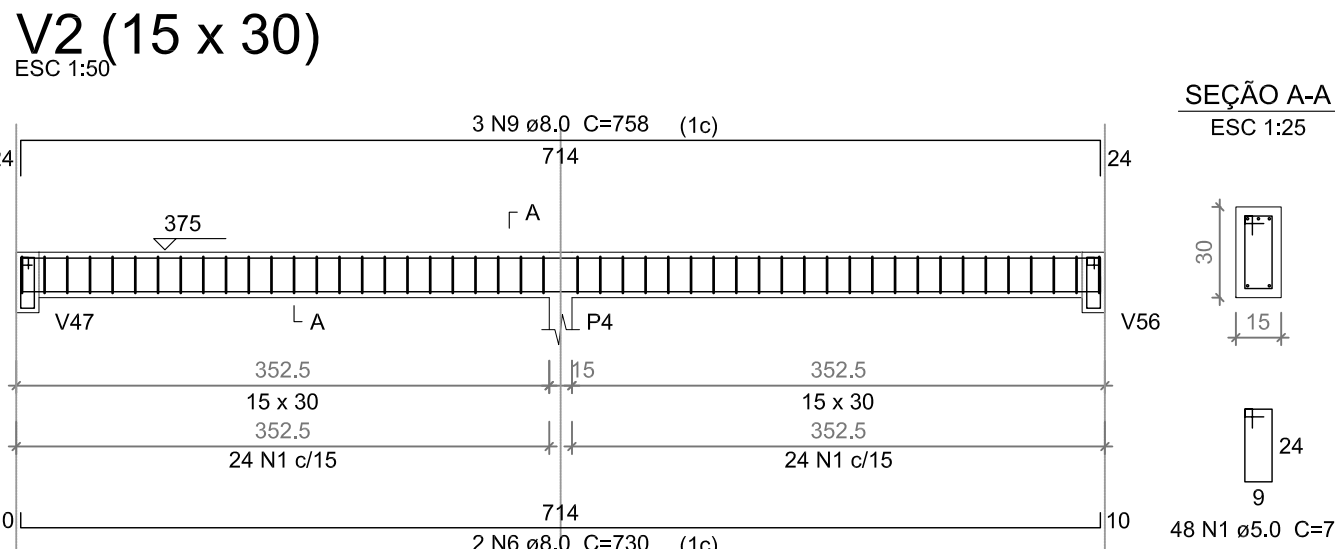
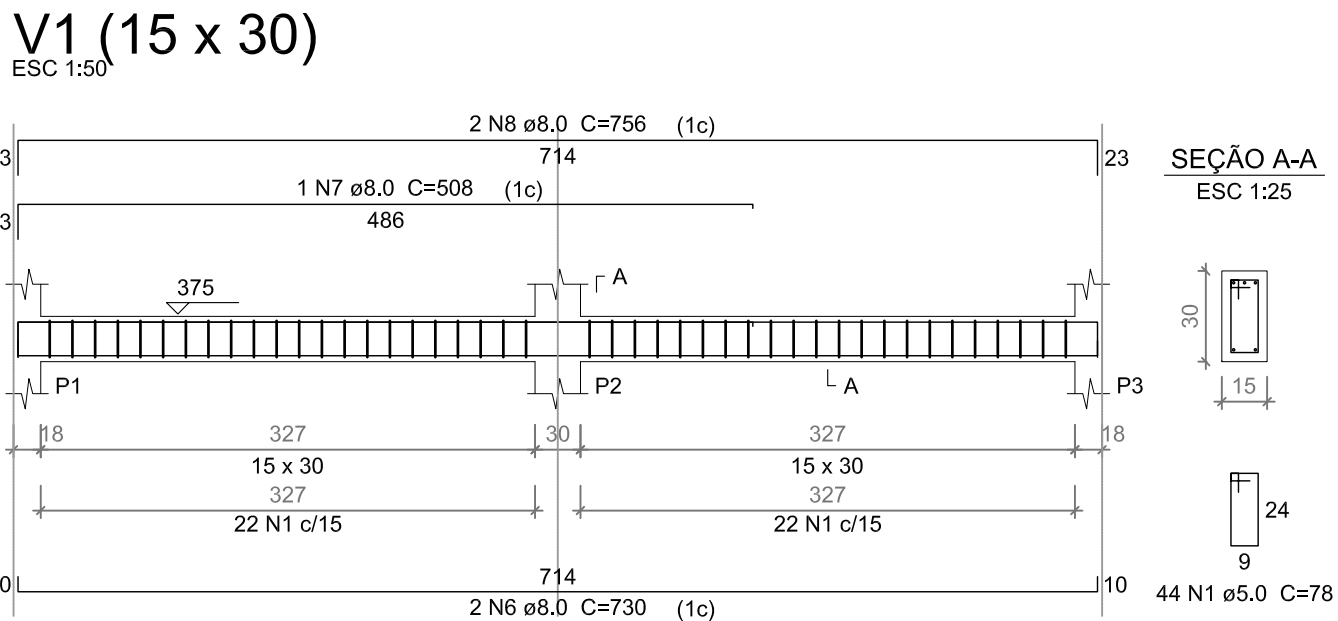
ENDEREÇO:

Rua Dom José Thomaz, 194 - Bairro São José - Aracaju/SE  
dipop@ifs.edu.br

TEL: (79)3711-3139

PROJETO ESTRUTURAL  
CAMPUS JAPARATUBA/SE

CLIENTE:	INSTITUTO FEDERAL DE SERGIPE - CAMPUS JAPARATUBA		
ENDEREÇO:	ROD. DEP. REINALDO MOURA, S/N - JAPARATUBA/SE	ESCALA:	1:100
PLANTA:	RESTAURANTE ARMAÇÃO DOS PILARES 1-2	DATA:	MAIO/2025
CAMPO: J A P C A M E S T P E 0 0 9 0 1 6 R 0 1		PRANCHA:	09/16



Relação do aço				
AÇO	N	DIAM (mm)	QUANT (Barras)	C.TOTAL (cm)
CA60	1	5.0	336	26208
	2	5.0	129	98
	3	5.0	41	108
CA50	4	5.0	71	58
	5	6.3	1	80
	6	8.0	4	730
	7	8.0	1	508
	8	8.0	2	756
	9	8.0	3	758
	10	8.0	4	355
	11	8.0	2	381
	12	8.0	1	905
	13	8.0	1	909
	14	8.0	2	1022
	15	8.0	3	911
	16	8.0	3	918
	17	8.0	2	243
	18	8.0	2	269
	19	8.0	2	228
	20	8.0	2	254
	21	8.0	2	116
	22	8.0	2	131
	23	8.0	2	80
	24	8.0	1	88
	25	8.0	3	97
	26	8.0	3	365
	27	8.0	2	125
	28	8.0	2	132
	29	8.0	1	672
	30	8.0	3	675
	31	8.0	1	678
	32	8.0	2	963
	33	8.0	2	363
	34	8.0	2	390
	35	8.0	2	75
	36	8.0	2	82
	37	8.0	1	239
	38	8.0	2	242
	39	8.0	1	740
	40	8.0	3	746
	41	8.0	2	360
	42	8.0	2	555
	43	8.0	2	581
	44	10.0	2	99
	45	10.0	2	390
	46	10.0	2	770
	47	10.0	4	783
	48	10.0	1	79
	49	10.0	2	401
	50	10.0	2	411
	51	10.0	1	231
	52	10.0	1	955
	53	10.0	2	968
	54	10.0	2	425
	55	10.0	1	712
	56	10.0	3	719
	57	10.0	2	395
	58	12.5	1	961
	59	12.5	2	968
	60	12.5	2	976
	61	12.5	4	740
	62	12.5	1	384
	63	12.5	1	822
	64	12.5	2	1004
	65	12.5	2	643
	66	16.0	2	1086

Resumo do aço			
AÇO	DIAM (mm)	C.TOTAL (m)	PESO + 10 % (kg)
CA50	6.3	0.8	0.2
	8.0	372.5	161.7
	10.0	149.7	101.5
	12.5	123.1	130.4
CA60	5.0	474	80.4
PESO TOTAL (kg)		431.5	
CA50		431.5	
CA60		80.4	

Volume de concreto (C-30) = 4,99 m³  
Área de forma = 79,62 m²

Nº	ALTERAÇÃO/REVISÕES	REVISADO POR	DATA
AUTOR DO PROJETO: Engº. Fredrico Damasceno Pinheiro CREA 270082778-3			
ENDEREÇO: Rua Dom José Thomaz, 194 - Bairro São José - Aracaju/SE dipop@ifs.edu.br			
TEL: (79)3711-3139			

PROJETO ESTRUTURAL  
CAMPUS JAPARATUBA/SE

CLIENTE:	INSTITUTO FEDERAL DE SERGIPE - CAMPUS JAPARATUBA	
ENDEREÇO:	ROD. DEP. REINALDO MOURA, S/N - JAPARATUBA/SE	ESCALA: 1:100
PLANTA:	RESTAURANTE ARMAÇÃO DAS VIGAS 1-3	DATA: MAIO/2025
CAMPO: OBRA: ESPECIALIDADE: FASE: SERIAL: QUANTITARIO: REVISÃO:		PRANCHA: 10/16
JAPCAMESTPE010016R01		



ESC 1:50

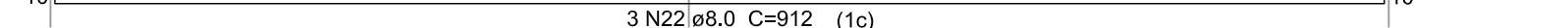


## ESC 1:50

## ESC



ESC 1:50

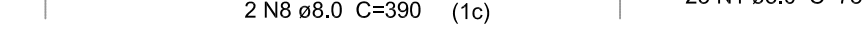


## ESC 1:50

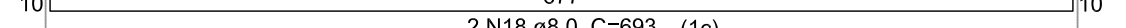


ESC 1:50

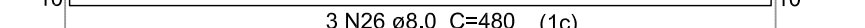
## ESC 1:50



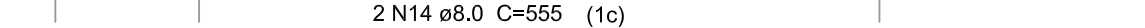
ESC 1:50



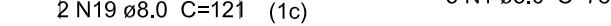
ESC 1:5



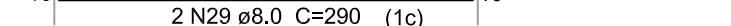
## ESC 1:50



## ESC 1:50



## ESC 1:50



ACO	N	DIAM (mm)	QUANT (Barras)	UNIT (cm)	C.TOTAL (cm)
CA50	1	5,0	525	78	40950
	2	5,0	29	98	2842
	3	CA60	26	58	1548
	4	5,0	2	274	546
	5	6,3	1	80	80
	6	6,3	5	70	350
	7	8,0	2	394	788
	8	8,0	4	390	1560
	9	8,0	2	417	834
	10	8,0	2	339	678
	11	8,0	2	406	812
	12	8,0	1	198	198
	13	8,0	2	416	832
	14	8,0	2	555	1110
	15	8,0	2	385	770
	16	8,0	2	284	568
	17	8,0	2	320	640
	18	8,0	2	693	1386
	19	8,0	2	121	242
	20	8,0	2	156	312
21	8,0	3	473	946	
22	8,0	3	912	2736	
23	8,0	3	449	1349	
24	8,0	3	455	1365	
25	8,0	3	474	1422	
26	8,0	3	480	1440	
27	8,0	4	125	500	
28	8,0	6	132	792	
29	8,0	4	230	1160	
30	8,0	2	196	392	
31	8,0	3	490	1470	
32	8,0	3	503	1509	
33	8,0	2	124	248	
34	8,0	1	119	119	
35	8,0	3	131	393	
36	8,0	2	325	650	
37	10,0	3	623	1869	
38	10,0	3	606	1818	
39	10,0	1	577	577	
40	10,0	2	587	1174	
41	10,0	2	947	1894	
42	10,0	1	247	247	
43	10,0	2	738	1476	
44	10,0	1	367	367	
45	10,0	1	677	677	
46	10,0	2	950	1900	
47	10,0	1	472	472	
48	10,0	3	475	1437	
49	12,5	1	816	816	
50	12,5	2	1064	2128	
51	12,5	2	609	1218	
52	12,5	2	692	1784	
53	12,5	2	513	1026	
54	12,5	2	524	1048	
55	12,5	2	227	454	
56	12,5	2	238	476	
57	12,5	2	350	700	
58	16,0	1	854	854	
59	16,0	2	1173	2346	
60	16,0	2	598	1196	
61	16,0	2	509	1018	
62	16,0	2	344	688	

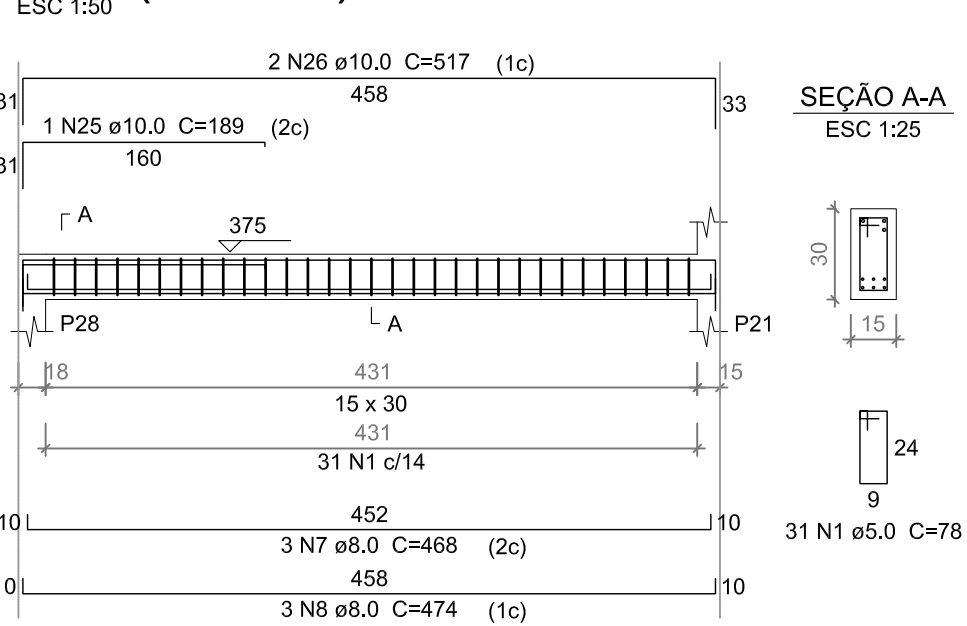
Volume de concreto (C-30) = 4.31 m<sup>3</sup>  
Área de forma = 71.71 m<sup>2</sup>

## CAMP 03 JAI AKAT UDA/ JL

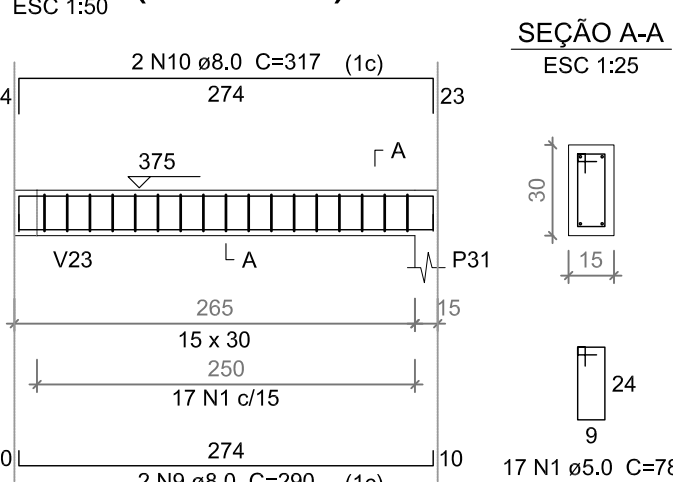
[illegible]



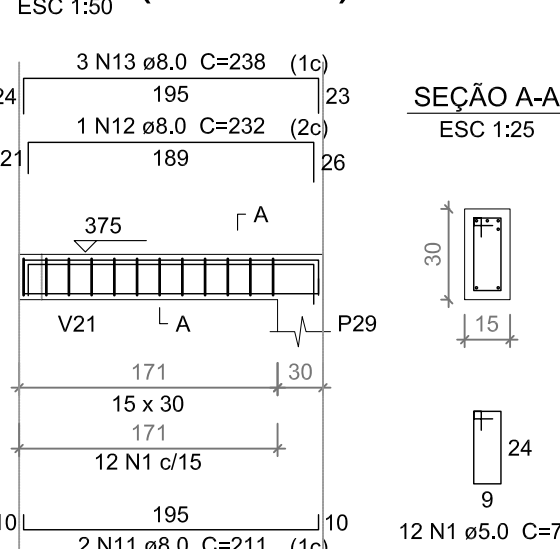
## V41 (15 x 30)



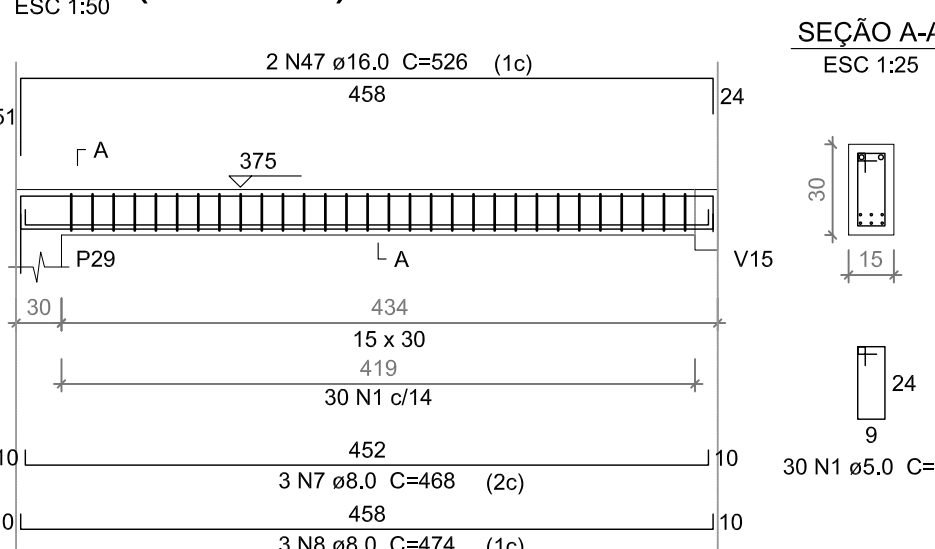
## V42 (15 x 30)



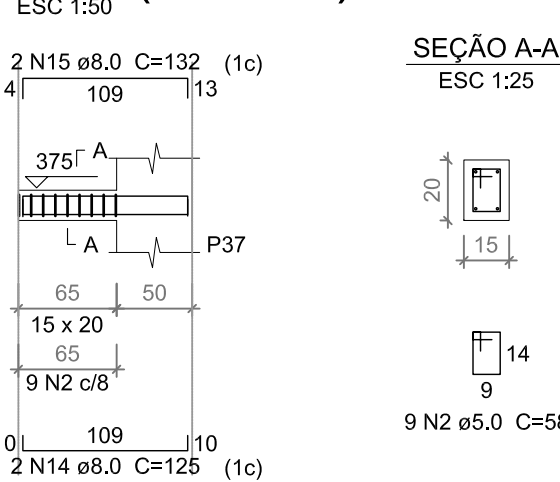
## V43 (15 x 30)



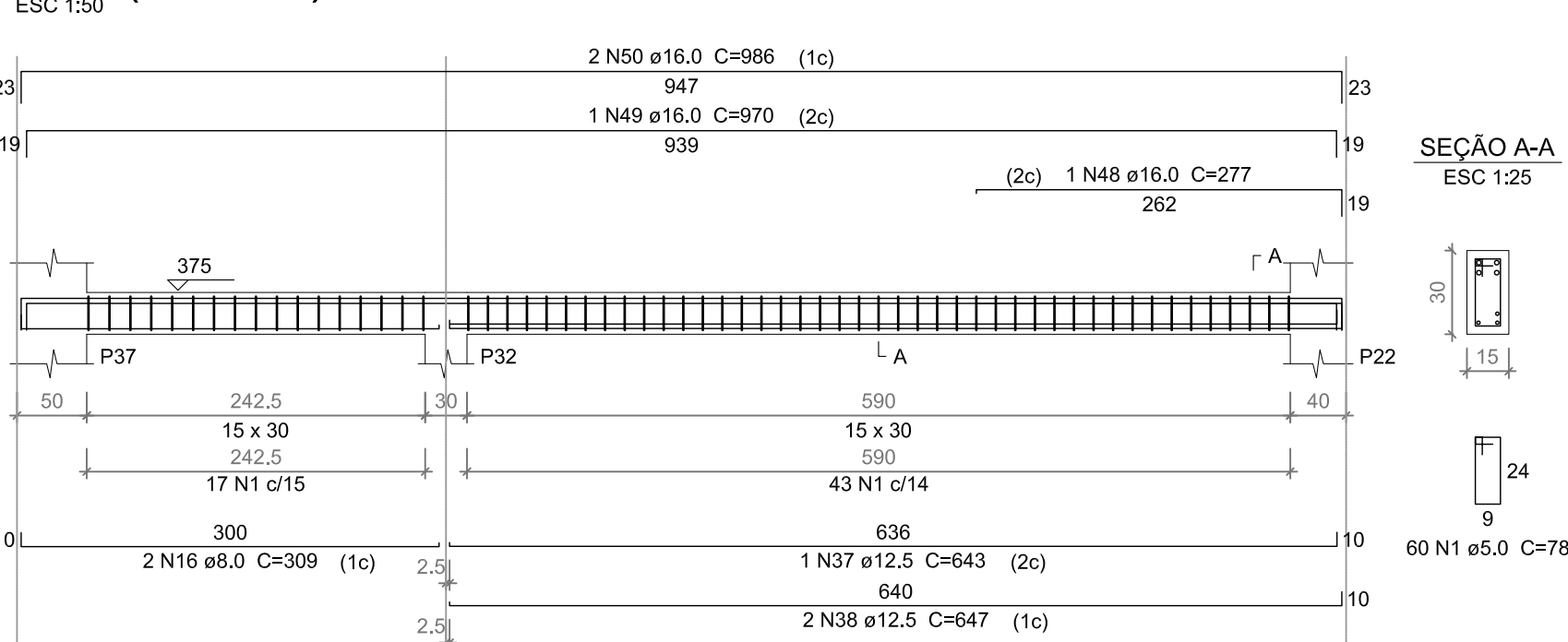
## V44 (15 x 30)



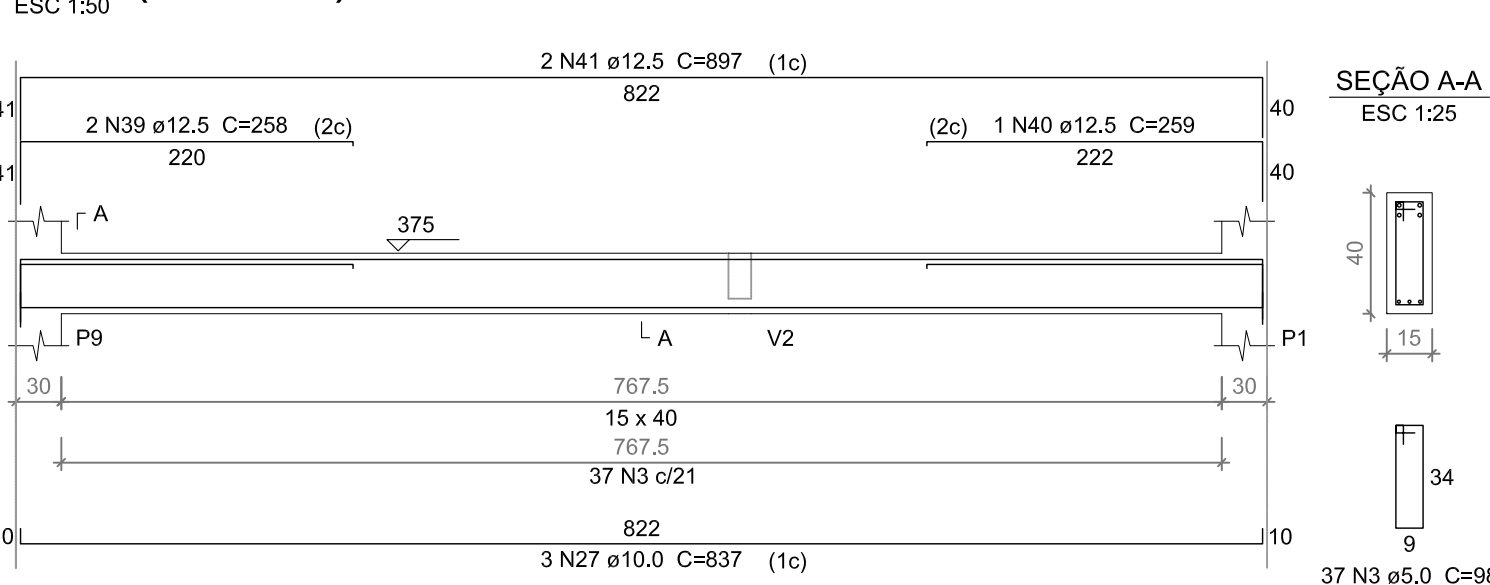
## V45 (15 x 20)



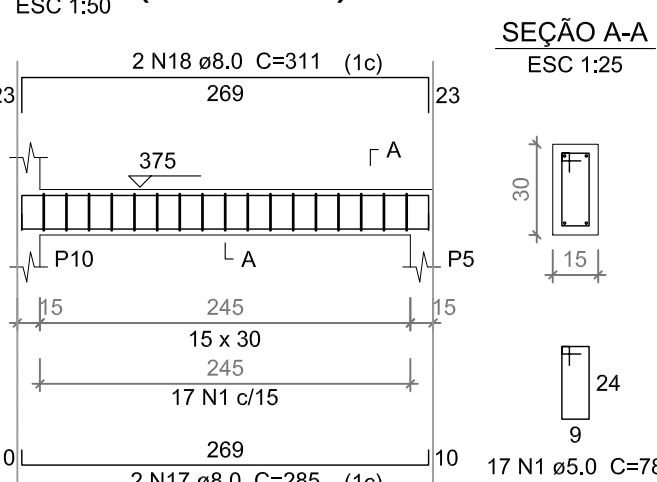
## V46 (15 x 30)



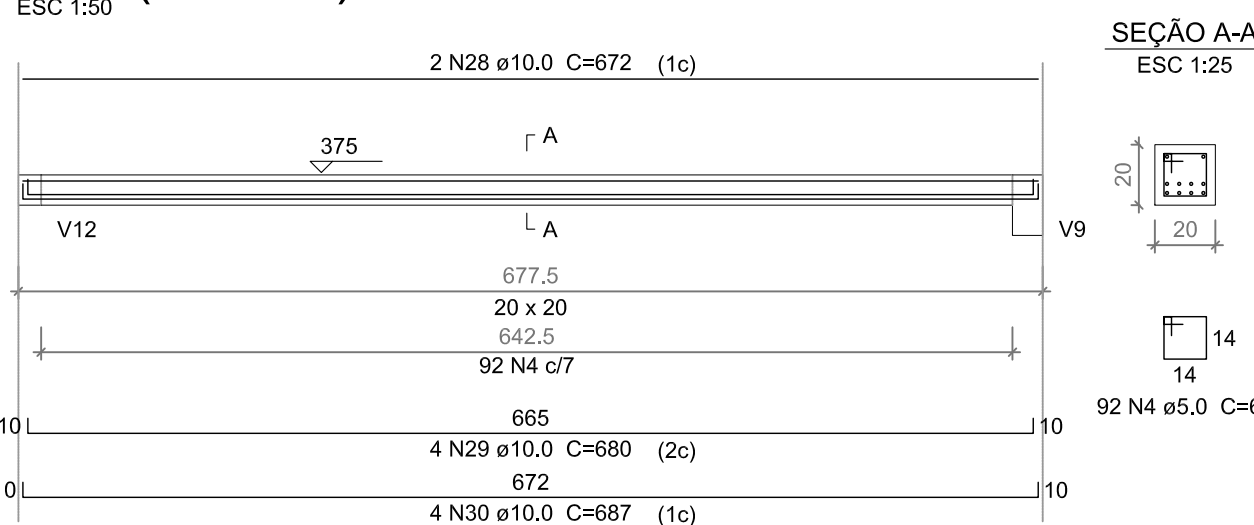
## V47 (15 x 40)



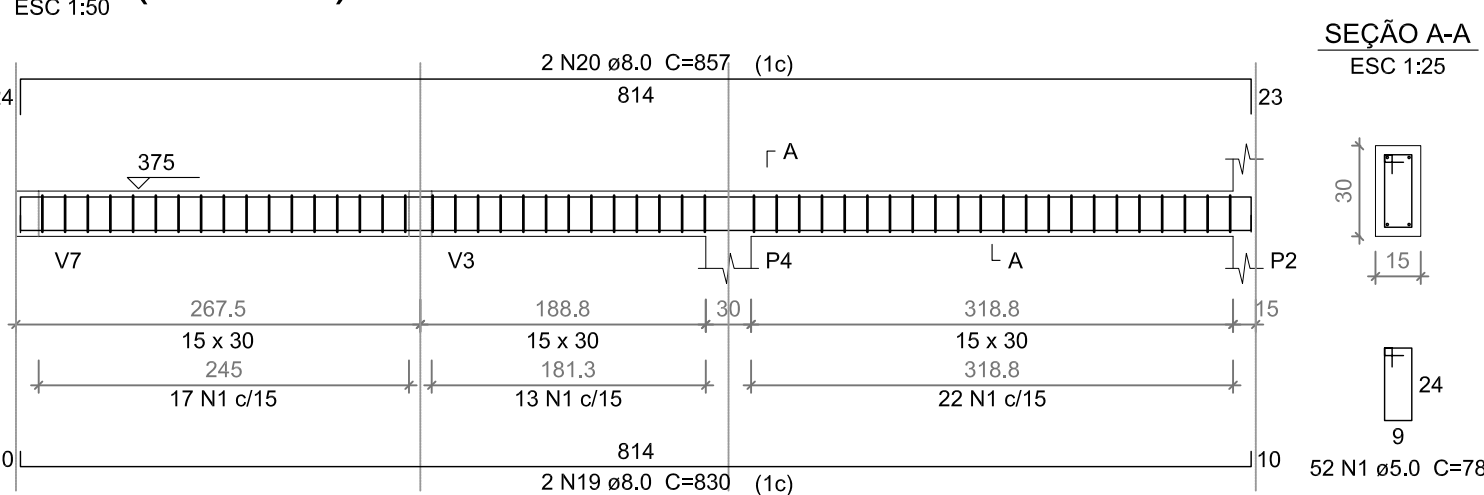
## V48 (15 x 30)



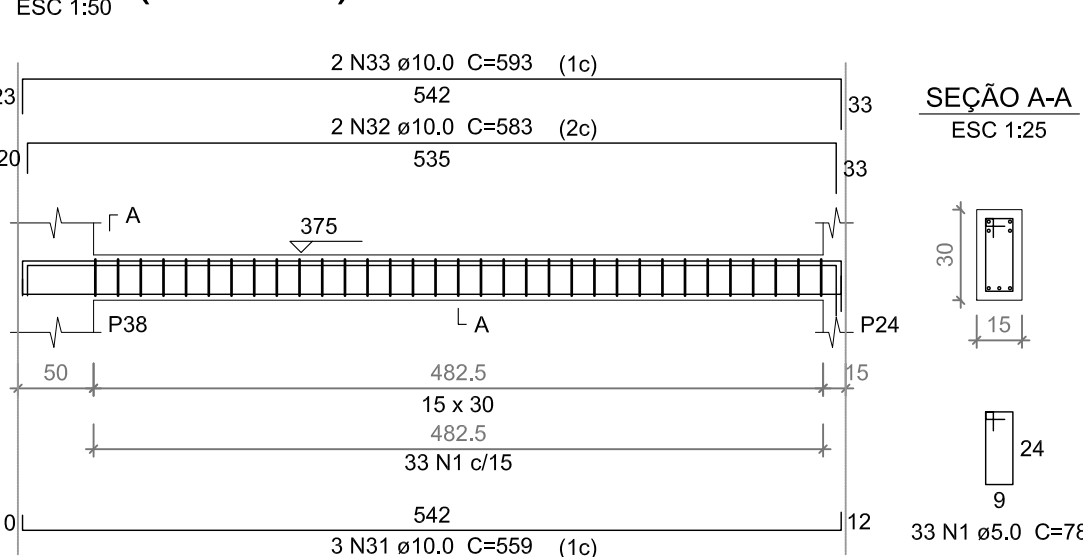
## V49 (20 x 20)



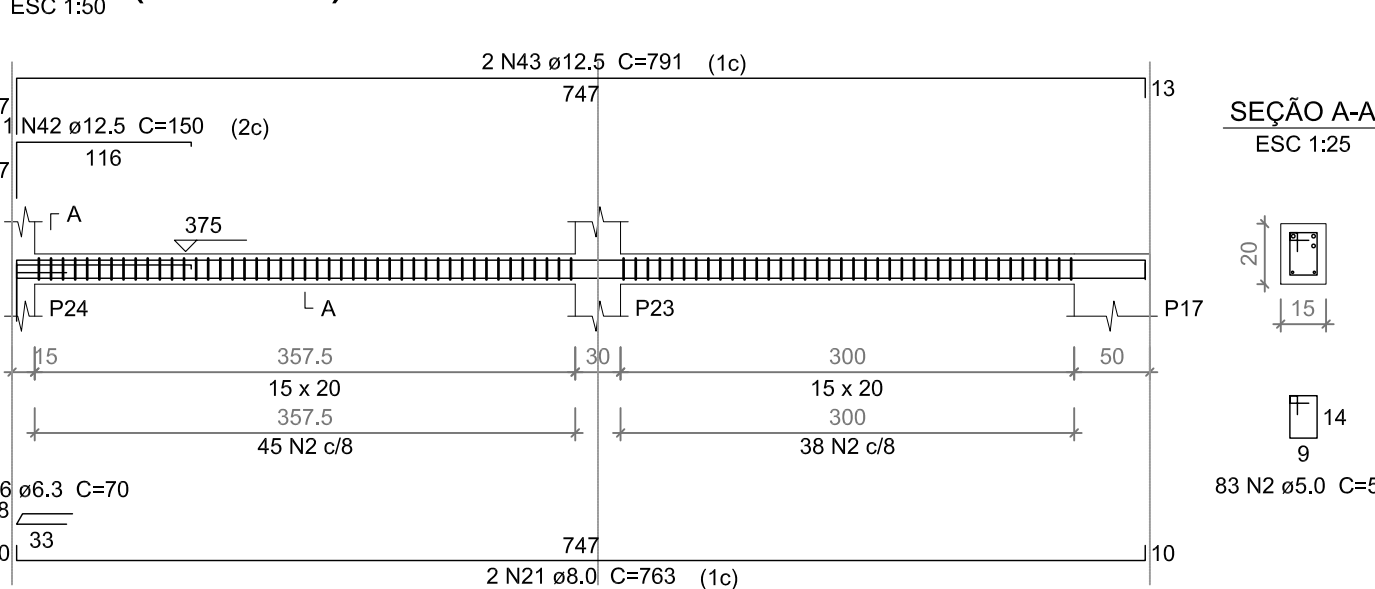
## V50 (15 x 30)



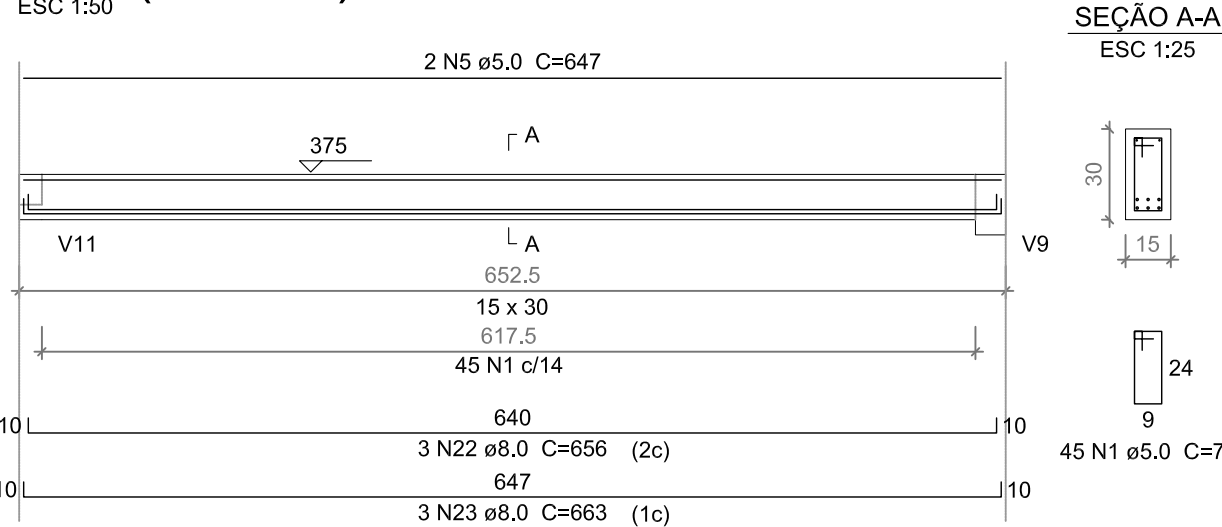
## V51 (15 x 30)



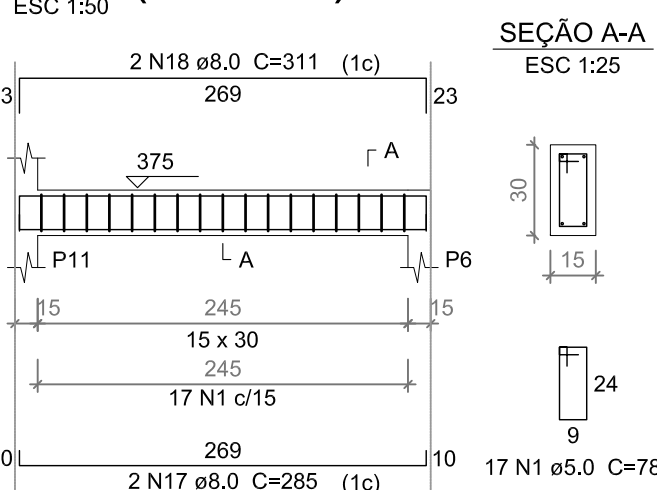
## V52 (15 x 20)



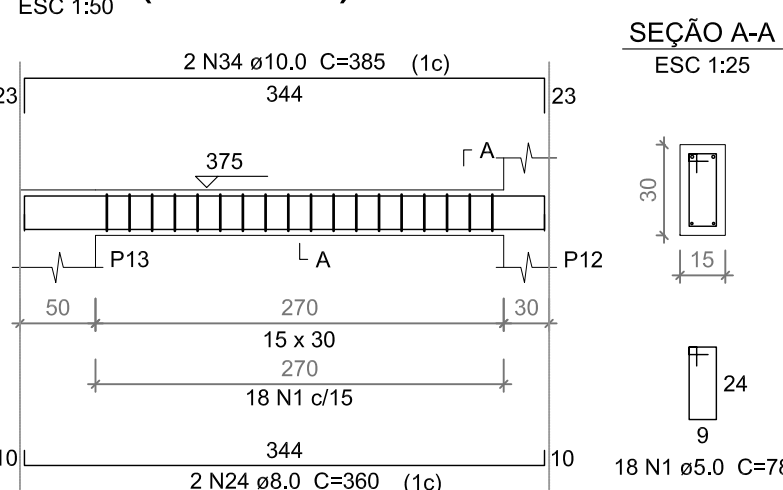
## V53 (15 x 30)



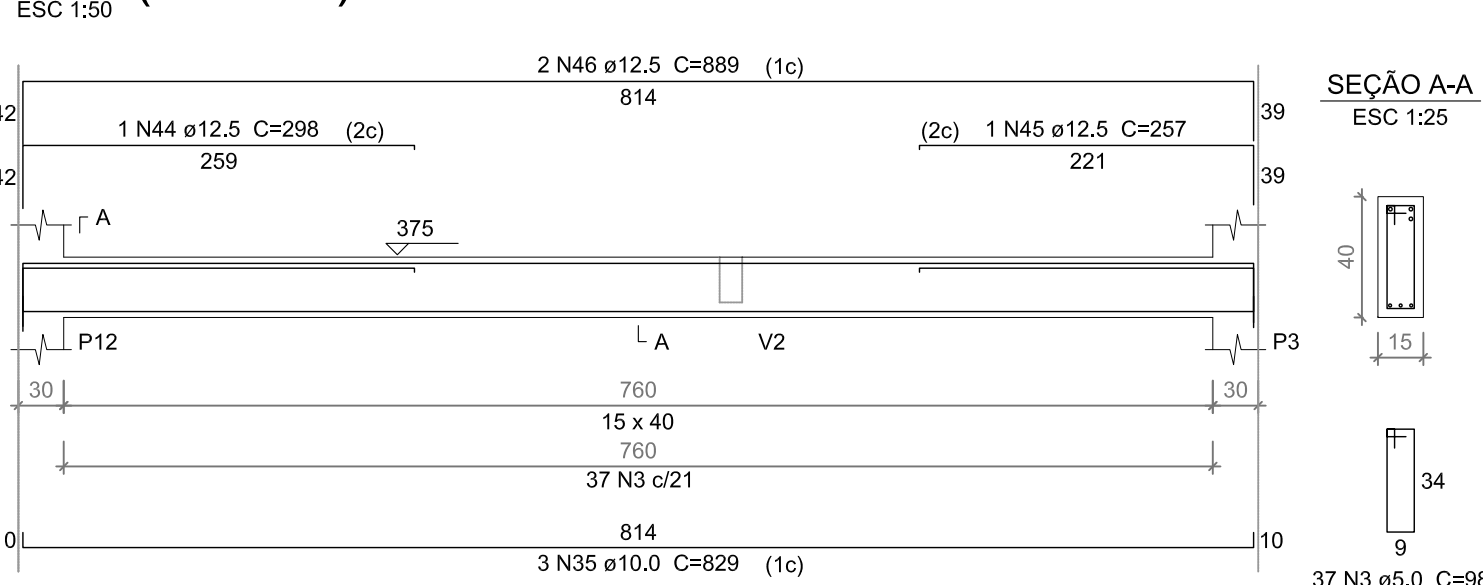
## V54 (15 x 30)



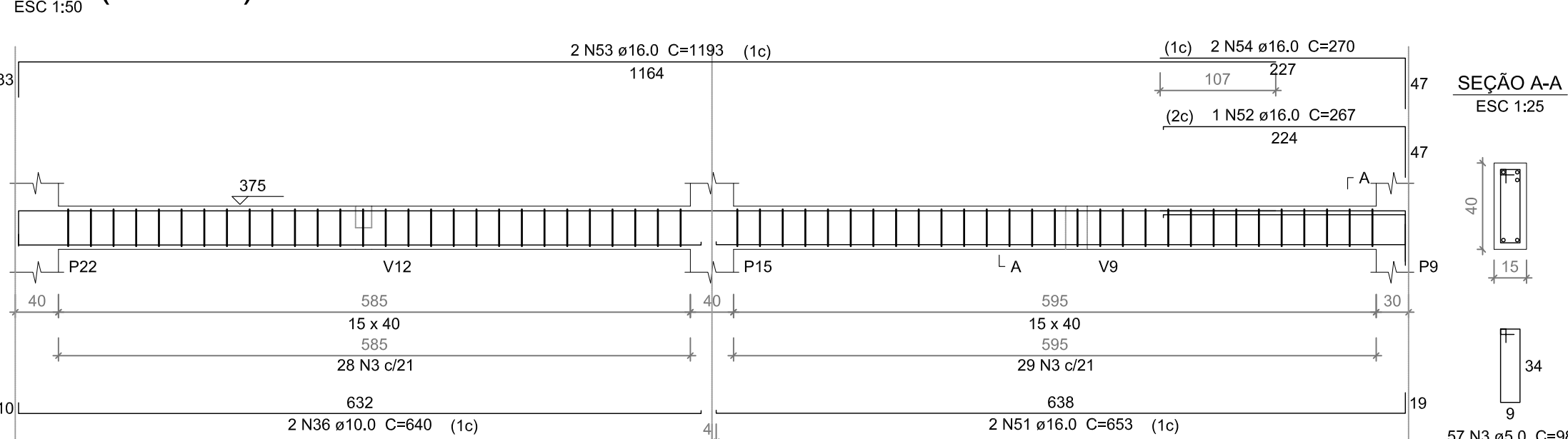
## V55 (15 x 30)



## V56 (15 x 40)



## V57 (15 x 40)



## Relação do aço

AÇO	N	DIAM (mm)	QUANT (Barras)	UNIT (cm)	C.TOTAL (cm)
V41					
V42					
V43					
V44					
V45					
V46					
V47					
V48					
V49					
V50					
V51					
V52					
V53					
V54					
V55					
V56					
V57					

## Resumo do aço

AÇO	DIAM (mm)	C.TOTAL (m)	PESO + 10 % (kg)
CA50	6.3	0.7	0.2
CA50	8.0	213.3	92.6
CA50	10.0	191.2	129.6
CA50	12.5	85.8	90.8
CA50	16.0	87.7	152.3
CA60	5.0	516.2	87.5
PESO TOTAL (kg)			
CA50		465.5	
CA60		87.5	

Volume de concreto (C-30) = 4.67 m³  
Área de forma = 76.35 m²

Nº	ALTERAÇÃO/REVISÕES	REVISADO POR	DATA
AUTOR DO PROJETO: Engº. Fredrico Damasceno Pinheiro CREA 270082778-3			
ENDEREÇO: Rua Dom José Thomaz, 194 - Bairro São José - Aracaju/SE dipop@ifs.edu.br			
TEL: (79)3711-3139			

PROJETO ESTRUTURAL  
CAMPUS JAPARATUBA/SE

CLIENTE:	INSTITUTO FEDERAL DE SERGIPE - CAMPUS JAPARATUBA		
ENDEREÇO:	ROD. DEP. REINALDO MOURA, S/N - JAPARATUBA/SE	ESCALA:	1:100
PLANTA:	RESTAURANTE ARMAÇÃO DAS VIGAS 3-3	DATA:	MAIO/2025
CHAMPO: ORN: ESPECIALIDADE: FASE: SERIAL: QUANTITARIO: REVISAO:		PRANCHA:	12/16
J A P C A M E S T P E O 1 2 O 1 6 R O 1			